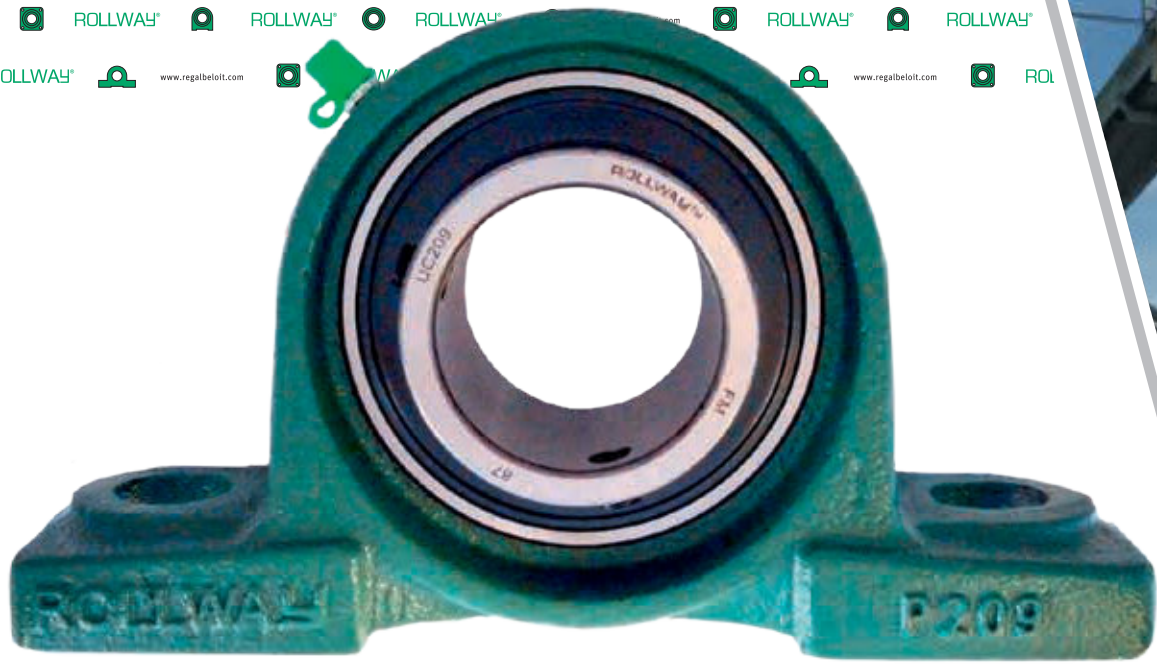


ROLLWAY®



MOUNTED BALL BEARINGS

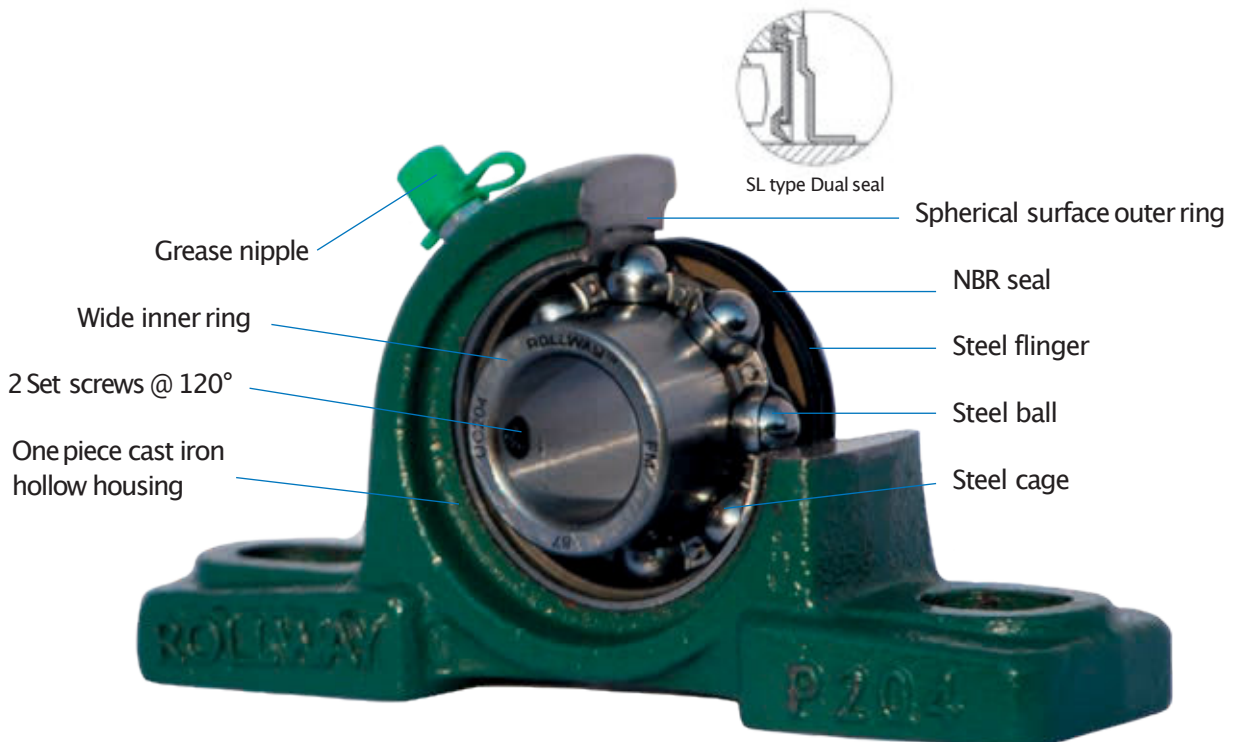
REGAL®





Rollway Pillow Blocks Benefits

- Suitable for OEM & replacement market.
- Fully interchangeable dimensions: bore diameter, shaft center height and fixing holes diameter and spacing.
- Suitable for easy mounting & dismantling.
- Absorb misalignment.
- Grease nipple standard for grease relubrication.
- Bearing insert is made from through harden 100Cr6 steel. The cage is made of steel.
- Insert meets high precision finish similar to P6. In production 100% noise inspection.
- Standard dual lip seal is made of NBR. The steel flinger is an additional barrier. A 3 lip seal is optional.
- High temperature inserts are optional: special heat-treated insert rings, high temperature grease and Viton rubber seal including flinger.
- Speed limits are similar to the 6200 2RS and 6300 2RS bearings.
- Wide inner ring and shaft locking by means of 2 set screws @ 120° or locking collar for a good stress\$ repartitions.
- Inner rings available with tapered bores that fit into standard sleeves.
- Housings are made from cast iron. Steel and Stainless-steel housings are optional.
- Other housing design and bearing types are optional.

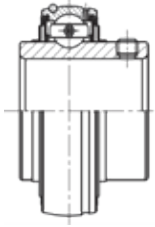




Nomenclature

- Radial clearance is standard in CN class. Radial class C3, C4 & C5 is optional.
- Inserts are available with 3 shaft locking systems for a good stress repartitions:

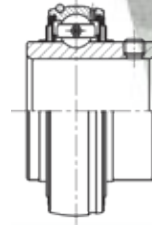
2 set screws @ 120°
(standard)
UC2 / UC3 / UCX



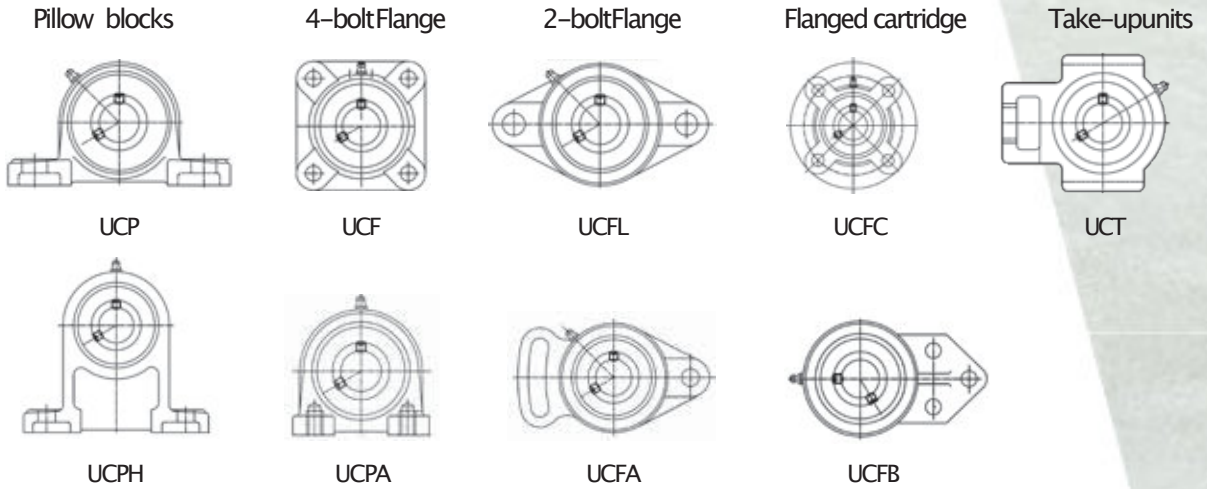
Tapered bores insert
(optional)
UK2



Locking collar
(optional)
HC2



Housing type



Other types are optional.

Seal Design

- Standard seal is made of a steel flinger and single lip NBR seal. 3 lip seal in option.
- Other seals designs are available.



Radial Clearance Table

Bore diameter d (mm)		C2		CN		C4		C5	
Over	incl.	Min	Max	Min	Max	Min	Max	Min	Max
10	18	3	18	11	25	18	33	25	45
18	24	5	20	13	28	20	36	28	48
24	30	5	20	13	28	23	41	30	53
30	40	6	20	15	33	28	46	40	64
40	50	6	23	18	36	30	51	45	73
50	65	8	28	23	43	38	61	55	90
65	80	10	30	25	51	46	71	65	105
80	100	12	36	30	58	53	84	75	120
100	120	15	41	36	66	61	97	90	140
120	140	18	48	41	81	71	114	105	160

Insert Tolerances Table

Bore diameter d (mm)		Cylindrical bore insert bearing					
		Ddmp		Vdp	DBs		Kia
Over	incl.	Min	Max	Max	Min	Max	Min
10	18	0	+15	10	0	-120	15
18	30	0	+18	12	0	-120	18
30	50	0	+21	14	0	-120	20
50	80	0	+24	16	0	-150	25
80	120	0	+28	19	0	-200	30
120	180	0	+33	22	0	-250	35

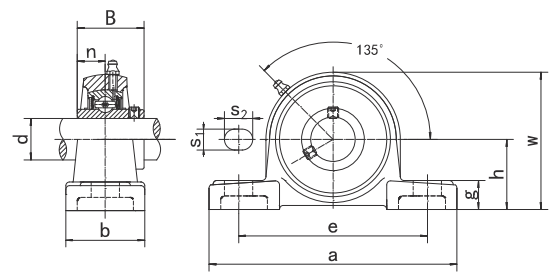
Recommended Shaft Tolerances Table

Bore diameter d (mm)		Recommended shaft tolerance							
		For high speed		Medium load		very high speed		Heavy load	
		m6		m7		n6		n7	
Over	incl.	Min	Max	Max	Min	Max	Min	Max	Min
10	18	+18	+7	+25	+7	+23	+12	+30	+12
18	30	+21	+8	+29	+8	+28	+15	+36	+15
30	50	+25	+9	+34	+9	+33	+17	+42	+17
50	80	+30	+11	+41	+11	+39	+20	+50	+20
80	120	+35	+13	+48	+13	+45	+23	+58	+23
120	180	+40	+15	+55	+15	+52	+27	+67	+27

Setscrew Maximum Tightening Torque

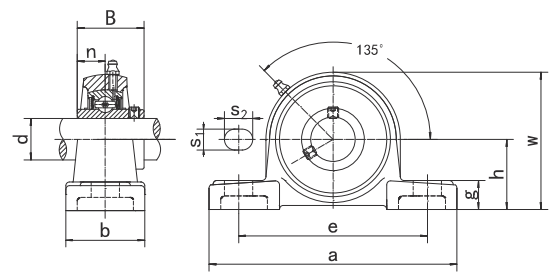
Set Screw Maximum Tightening Torque				Set Screw Maximum Tightening Torque			
Metric	Nm	Inch size	lbf-inch	Metric	Nm	Inch size	lbf-inch
M5 x 0,8	3,4	10-32UNF	30	M14 x 1,5	41,2	1/2-20	287
M6 x 1,0	5,4	1/4-28	48	M16 x 1,5	62,8	9/16-18	365
M8 x 1,0	11,3	5/6-24	100	M18 x 1,5	73,4	5/8-18	556
M10 x 1,0	21,6	3/8-24	192	M20 x 1,5	117,7		
M12 x 1,5	32,4	7/16-20	210				

Data Table UCP2 Pillow Block



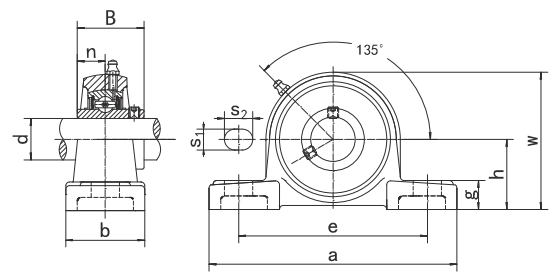
Unit NO.	Dimensions (mm/ in.)											Bolt Size mm/in	Weight (kg)
	d	h	a	e	b	s1	s2	g	w	B	n		
UCP201	12	30,2	127	95	38	13	19	14	62	31	12,7	M10	0,65
201-8	1/2	1 1/5	5	3 3/4	1 1/2	1/2	3/4	5/9	2 4/9	1,2205	0,5000	3/8	0,64
UCP202	15	30,2	127	95	38	13	19	14	62	31	12,7	M10	0,64
202-9	9/16												0,64
202-10	5/8	1 1/5	2 1/5	3 1/5	4 1/5	5 1/5	6 1/5	7 1/5	8 1/5	1,2205	0,5000	3/8	0,64
UCP203	17	30,2	127	95	38	13	19	14	62	31	12,7	M10	0,63
203-11	11/16	1 1/5	5	3 3/4	1 1/2	1/2	3/4	5/9	2 4/9	1,2205	0,5000	3/8	0,62
UCP204	20	33,3	127	95	38	13	19	14	65	31	12,7	M10	0,64
204-12	3/4	1 1/3	5	3 3/4	1 1/2	1/2	3/4	5/9	2 5/9	1,2205	0,5000	3/8	0,64
UCP205	25	36,5	140	105	38	13	19	15	71	34,1	14,3	M10	0,76
205-13	13/16												0,80
205-14	7/8												0,79
205-15	15/16	1 3/7	5 1/2	4 1/7	1 1/2	1/2	3/4	3/5	2 4/5	1,3425	0,5630	3/8	0,77
205-16	1												0,76
UCP206	30	42,9	160	121	44	17	20	17	84	38,1	15,9	M14	1,20
206-17	1-1/16												1,21
206-18	1-1/8												1,22
206-19	1-3/16	1 2/3	6 2/7	4 3/4	1 3/4	2/3	4/5	2/3	3 1/3	1,5000	0,6260	1/2	1,20
206-20	1-1/4												1,19
UCP207	35	47,6	167	127	48	17	20	18	93	42,9	17,5	M14	1,46
207-20	1-1/4												1,53
207-21	1-5/16												1,50
207-22	1-3/8	1 7/8	6 4/7	5	1 8/9	2/3	4/5	5/7	3 2/3	1,6890	0,6890	1/2	1,47
207-23	1-7/16												1,44
UCP208	40	49,2	184	137	54	17	20	18	100	49,2	19	M14	1,86
208-24	1-1/2												1,90
208-25	1-9/16	2	7 1/4	5 2/5	2 1/8	2/3	4/5	5/7	4	1,9370	0,7480	1/2	1,87
UCP209	45	54	190	146	54	17	20	20	106	49,2	19	M14	2,06
209-26	1-5/8												2,16
209-27	1-11/16	2 1/8	7 1/2	5 3/4	2 1/8	2/3	4/5	4/5	4 1/6	1,9370	0,7480	1/2	2,12
209-28	1-3/4												2,08
UCP210	50	57,2	206	159	60	20	23	21	113	51,6	19	M16	2,61
210-29	1-13/16												2,73
210-30	1-7/8												2,68
210-31	1-15/16	2 1/4	8 1/9	6 1/4	2 1/3	4/5	1	5/6	4 4/9	2,0315	0,7480	5/8	2,63
210-32	2												2,59
UCP211	55	63,5	219	171	60	20	23	23	125	55,6	22,2	M16	3,23
211-32	2												3,38
211-33	2-1/16												3,32
211-34	2-1/8	2 1/2	8 5/8	6 3/4	2 1/3	4/5	1	1	5	2,1890	0,8740	5/8	3,28
211-35	2-3/16												3,21
UCP212	60	69,8	241	184	70	20	23	25	138	65,1	25,4	M16	4,40
212-36	2-1/4												4,57
212-37	2-5/16												4,49
212-38	2-3/8	2 3/4	9 1/2	7 1/4	2 3/4	4/5	1	1	5 3/7	2,5630	1,0000	5/8	4,42
212-39	2-7/16												4,35
UCP213	65	76,2	265	203	70	25	28	27	150	65,1	25,4	M20	5,35
213-40	2-1/2												5,44
213-41	2-9/16	3	10 3/7	8	2 3/4	1	1 1/9	1	6	2,5630	1,0000	3/4	5,35
UCP214	70	79,4	266	210	72	25	28	27	156	74,6	30,2	M20	5,86
214-42	2-5/8												6,07
214-43	2-11/16	3 1/8	10 1/2	8 1/4	2 5/6	1	1 1/9	1	6 1/7	2,937	1,189	3/4	5,97
214-44	2-3/4												5,87
UCP215	75	82,6	275	217	74	25	28	28	162	77,8	33,3	M20	6,45
215-45	2-13/16												6,45
215-46	2-7/8												6,70
215-47	2-15/16	3 1/4	10 5/6	8 1/2	3	1	1 1/9	1 1/9	6 3/8	3,0630	1,3110	3/4	6,59
215-48	3												6,39
UCP216	80	88,9	292	232	78	25	28	30	174	82,6	33,3	M20	7,86
216-49	3-1/16												8,04
216-50	3-1/8	3 1/2	11 1/2	9 1/7	3	1	1 1/9	1 1/6	6 6/7	3,2520	1,3110	3/4	7,91
216-51	3-3/16												7,78
UCP217	85	95,2	310	247	83	25	28	32	185	85,7	34,1	M20	9,56
217-52	3-1/4												9,68
217-53	3-5/16	3 3/4	12 1/5	9 5/7	3 1/4	1	1 1/9	1 1/4	7 2/7	3,3740	1,3425	3/4	9,64
217-55	3-7/16												9,35
UCP218	90	101,6	327	262	88	27	30	33	198	96	39,7	M22	11,59
218-56	3-1/2	4	12 7/8	10 1/3	3 1/2	1	1 1/6	1 2/7	7 4/5	3,7795	1,5630	7/8	11,70

Data Table UCP3 Pillow Block



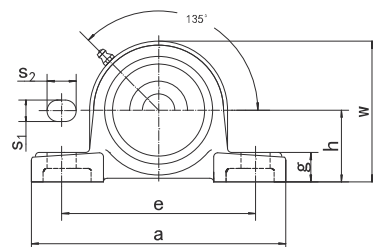
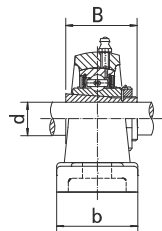
Unit NO.	Dimensions (mm / in.)											Bolt size mm/in.	Weight (kg)
	d	h	a	e	b	S1	S2	G	w	B	n		
UCP305	25	45	175	132	45	17	20	15	85	38	15	M14	1,27
305-13	13/16												1,32
305-14	7/8												1,30
305-15	15/16	1 7/9	6 8/9	5 1/5	1 7/9	2/3	4/5	3/5	3 1/3	1,4961	0,5906	1/2	1,28
305-16	1												1,27
UCP306	30	50	180	140	50	17	20	18	95	43	17	M14	1,73
306-17	1-1/16												1,79
306-18	1-1/8	1,9685	7,0866	5,5118	1,9685	0,6693	0,7874	0,7087	3,7402	1,6929	0,6693	1/2	1,76
306-19	1-3/16												1,74
UCP307	35	56	210	160	56	17	25	20	106	48	19	M14	2,38
307-20	1-1/4												2,44
307-21	1-5/16												2,41
307-22	1-3/8	2,2047	8,2677	6,2992	2,2047	0,6693	0,9843	0,7874	4,1732	1,8898	0,7480	1/2	2,38
307-23	1-7/16												2,35
UCP308	40	60	220	170	60	17	27	22	116	52	19	M14	3,08
308-24	1-1/2	2 1/3	8 2/3	6 2/3	2 1/3	2/3	1	6/7	4 4/7	2,0472	0,7480	1/2	3,12
308-25	1-9/16												3,08
UCP309	45	67	245	190	67	20	30	24	129	57	22	M16	4,17
309-26	1-5/8												4,27
309-27	1-11/16	2 2/3	9 2/3	7 1/2	2 2/3	4/5	1 1/6	1	5	2,2441	0,8661	5/8	4,23
309-28	1-3/4												4,18
UCP310	50	75	275	212	75	20	35	27	143	61	22	M16	5,69
310-29	1-13/16												6,03
310-30	1-7/8	3	10 5/6	8 1/3	3	4/5	1 3/8	1	5 5/8	2,4016	0,8661	5/8	5,78
310-31	1-15/16												5,72
UCP311	55	80	310	236	80	20	38	30	154	66	25	M16	7,24
311-32	2												7,42
311-33	2-1/16	3 1/7	12 1/5	9 2/7	3 1/7	4/5	1 1/2	1 1/6	6	2,5984	0,9843	5/8	7,35
311-34	2-1/8												7,29
311-35	2-5/16												7,21
UCP312	60	85	330	250	85	25	38	32	165	71	26	M20	8,88
312-36	2-1/4												9,03
312-37	2-5/15	3 1/3	13	9 5/6	3 1/3	1	1 1/2	1 1/4	6 1/2	2,7953	1,0236	3/4	8,95
312-38	2-3/8												8,86
312-39	2-7/16												8,78
UCP313	65	90	340	260	90	25	38	33	176	75	30	M20	10,51
313-40	2-1/2	3 1/2	13 2/5	10 1/4	3 1/2	1	1 1/2	1 2/7	7	3	1,1811	3/4	10,59
313-41	2-9/16												10,49
UCP314	70	95	360	280	90	27	40	35	187	78	33	M22	12,04
314-42	2-3/8												12,26
314-43	2-11/16	3 3/4	14 1/6	11	3 1/2	1	1 4/7	1 3/8	7 1/3	3	1,2992	7/8	12,15
314-44	2-3/4												12,05
UCP315	75	100	380	290	100	27	40	35	198	82	32	M22	14,51
315-45	2-13/16												14,78
315-46	2-7/8												14,64
315-47	2-15/16	4	15	11 3/7	4	1	1 4/7	1 3/8	7 4/5	3,2283	1,2598	7/8	14,55
315-48	3												14,42
UCP316	80	106	400	300	110	27	40	40	210	86	34	M22	17,59
316-49	3-1/16												17,76
316-50	3-1/8	4 1/6	15 3/4	11 4/5	4 1/3	1	1 4/7	1 4/7	8 1/4	3,3858	1,3386	7/8	17,62
316-51	3-3/16												17,53
UCP317	85	112	420	320	110	33	45	40	220	96	40	M27	19,36
317-52	3-1/4												19,58
317-53	3-5/16	4 2/5	16 1/2	12 3/5	4 1/3	1 2/7	1 7/9	1 4/7	8 2/3	3,7795	1,5748	1	19,55
317-55	3-7/16												19,33
UCP318	90	118	430	330	110	33	45	45	235	96	40	M27	22,47
318-55	3-7/16	4 2/3	17	13	4 1/3	1 2/7	1 7/9	1 7/9	9 1/4	3,7795	1,5748	1	22,76
318-56	3-1/2												22,58
UCP319	95	125	470	360	120	36	50	45	250	103	41	M30	27,84
319-58	3-5/8												28,17
319-59	3-11/16	5	18 1/2	14 1/6	4 5/7	1 3/7	2	1 7/9	9 5/6	4,0551	1,6142	1-1/8	27,99
319-60	3-3/4												27,80
UCP320	100	140	490	380	120	36	50	50	275	108	42		33,76
320-64	4	5 1/2	19 2/7	15	4 5/7	1 3/7	2	2	10 5/6	4,2520	1,6535	M30	33,56
UCP322	110	150	520	400	140	40	55	55	300	117	46	M33	45,25
	6	20 1/2	15 3/4	15 3/4	5 1/2	1 4/7	2 1/6	2 1/6	11 4/5	4,6063	1,8110		

Data Table UCPX Pillow Block



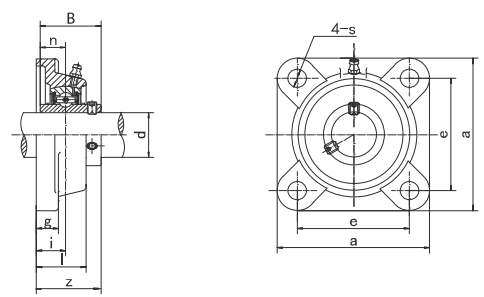
Unit NO.	Dimensions (mm/ in.)											Bolt size mm/in.	Weight (kg)
	d	h	a	e	b	S1	S2	G	w	B	n		
UCPX05	25,0	44,4	159,0	119,0	51,0	17,0	20,0	18,0	85,0	38,1	15,9	M14	1,33
305-13	13/16	1 3/4	6 1/4	4 2/3	2	2/3	4/5	5/7	3 1/3	1,5000	0,6260	1/2	
305-14	7/8												
305-15	15/16												
305-16	1												
UCPX06	30,0	47,6	175,0	127,0	57,0	17,0	20,0	20,0	93,0	42,9	17,5	M14	1,71
306-17	1-1/16	1 7/8	6 8/9	5	2 1/4	2/3	4/5	4/5	3 2/3	1,6890	0,6890	1/2	
306-18	1-1/8												
306-19	1-3/16												
UCPX07	35,0	54,0	203,0	144,0	57,0	17,0	20,0	21,0	105,0	49,2	19,0	M14	2,3
307-20	1-1/4	2 1/8	8	5 2/3	2 1/4	2/3	4/5	5/6	4 1/7	1,9370	0,7480	1/2	
307-21	1-5/16												
307-22	1-3/8												
307-23	1-7/16												
UCPX08	40,0	58,7	222,0	156,0	67,0	20,0	23,0	26,0	111,0	49,2	19,0	M16	2,84
308-24	1-1/2	2 1/3	8 3/4	6 1/7	2 2/3	4/5	1	1	4 3/8	1,9370	0,7480	5/8	
308-25	1-9/16												
UCPX09	45	58,7	222,0	156,0	67,0	20,0	23,0	26,0	116,0	51,6	19,0	M16	3,2
309-26	1-5/8	2 1/3	8 3/4	6 1/7	2 2/3	4/5	1	1	4 4/7	2,0315	0,7480	5/8	
309-27	1-11/16												
309-28	1-3/4												
UCPX10	50	63,5	241,0	171,0	73,0	20,0	23,0	27,0	126,0	55,6	22,2	M16	4,07
310-29	1-13/16	2 1/2	9 1/2	6 3/4	2 7/8	4/5	1	1	5	2,1890	0,8740	5/8	
310-30	1-7/8												
310-31	1-15/16												
UCPX11	55	69,8	260,0	184,0	79,0	25,0	28,0	30,0	137,0	65,1	25,4	M20	5,18
311-32	2	2 3/4	10 1/4	7 1/4	3 1/9	1	1 1/9	1 1/6	5 2/5	2,5630	1,0000	3/4	
311-33	2-1/16												
311-34	2-1/8												
311-35	2-5/16												
UCPX12	60	76,2	286,0	203,0	83,0	25,0	28,0	33,0	151,0	65,1	25,4	M20	6,67
312-36	2-1/4	3	11 1/4	8	3 1/4	1	1 1/9	1 2/7	6	2,5630	1,0000	3/4	
312-37	2-5/15												
312-38	2-3/8												
312-39	2-7/16												
UCPX13	65	76,2	286,0	203,0	83,0	25,0	28,0	33,0	154,0	74,6	30,2	M20	6,92
313-40	2-1/2	3	11 1/4	8	3 1/4	1	1 1/9	1 2/7	6	2,9370	1,1890	3/4	
313-41	2-9/16												
UCPX14	70	88,9	330,0	229,0	89,0	27,0	30,0	35,0	170,0	77,8	33,3	M22	8,64
314-42	2-3/8	3 1/2	13	9	3 1/2	1	1 1/6	1 3/8	6 2/3	3,0630	1,3110	7/8	
314-43	2-11/16												
314-44	2-3/4												
UCPX15	75	88,9	330,0	229,0	89,0	27,0	30,0	35,0	175,0	82,6	33,3	M22	9,4
315-45	2-13/16	3 1/2	13	9	3 1/2	1	1 1/6	1 3/8	6 8/9	3,2520	1,3110	7/8	
315-46	2-7/8												
315-47	2-15/16												
315-48	3												
UCPX16	80	101,6	381,0	283,0	102,0	27,0	30,0	40,0	194,0	85,7	34,1	M22	13,4
316-49	3-1/16	4	15	11 1/7	4	1	1 1/6	1 4/7	7 2/3	3,3740	1,3425	7/8	
316-50	3-1/8												
316-51	3-3/16												
UCPX17	85	101,6	381,0	283,0	102,0	27,0	30,0	40,0	200,0	96,0	39,7	M22	14,6
317-52	3-1/4	4	15	11 1/7	4	1	1 1/6	1 4/7	7 7/8	3,7795	1,5630	7/8	
317-53	3-5/16												
317-55	3-7/16												
UCPX18	90	101,6	381,0	283,0	111,0	27,0	30,0	40,0	206,0	104,0	42,9	M22	16,5
318-55	3-7/16	4	15	11 1/7	4 3/8	1	1 1/6	1 4/7	8 1/9	4,0945	1,6890	7/8	
318-56	3-1/2												
UCPX20	100	127,0	432,0	337,0	121,0	33,0	36,0	45,0	244,0	117,5	49,2	M27	24,9
320-64	4	5	17	13 1/4	4 3/4	1 2/7	1 3/7	1 7/9	9 3/5	4,6260	1,9370	1	

Data Table UKP2 Pillow Block



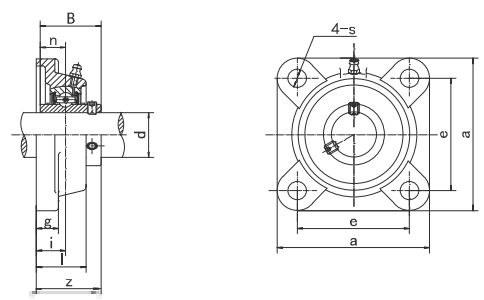
Unit NO.	Dimensions (mm / in.)										Housing No.	Weight (kg)
	d	h	a	e	b	s1	s2	g	w	B		
UKP205;H2305	20	36,5	140	105	38	13	19	15	71	35	P205	0,81
205;HE2305	3/4	1 3/7	5 1/2	4 1/7	1 1/2	1/2	3/4	3/5	2 4/5	1,3780		
UKP206;H2306	25	42,9	160	121	44	17	20	17	84	38	P206	1,26
206;HE2306	1	1 2/3	6 2/7	4 3/4	1 3/4	2/3	4/5	2/3	3 1/3	1,4961		
206;HS2306	7/8											
UKP207;H2307	30	47,6	167	127	48	17	20	18	93	43	P207	1,53
207;HS2307	1-1/8	1 7/8	6 4/7	5	1 8/9	2/3	4/5	5/7	3 2/3	1,6929		
UKP208;H2308	35	49,2	184	137	54	17	20	18	100	46	P208	1,93
208;HE2308	1-1/4	2	7 1/4	5 2/5	2 1/8	2/3	4/5	5/7	4	1,8110		
208;HS2308	1-3/8											
UKP209;H2309	40	54	190	146	54	17	20	20	106	50	P209	2,18
209;HA2309	1-7/16	2 1/8	7 1/2	5 3/4	2 1/8	2/3	4/5	4/5	4 1/6	1,9685		
209;HE2309	1-1/2											
209;HS2309	1-5/8											
UKP210;H2310	45	57,2	206	159	60	20	23	21	113	55	P210	2,78
210;HA2310	1-11/16	2 1/4	8 1/9	6 1/4	2 1/3	4/5	1	5/6	4 4/9	2,1654		
210;HE2310	1-3/4											
210;HS2310	1-5/8											
UKP211;H2311	50	63,5	219	171	60	20	23	23	125	59	P211	3,39
211;HA2311	1-15/16	2 1/2	8 5/8	6 3/4	2 1/3	4/5	1	1	5	2,3228		
211;HE2311	2											
211;HS2311	1-7/8											
UKP212;H2312	55	69,8	241	184	70	20	23	25	138	62	P212	4,52
212;HS2312	2-1/8	2 3/4	9 1/2	7 1/4	2 3/4	4/5	1	1	5 3/7	2,4409		
UKP213;H2313	60	76,2	265	203	70	25	28	27	150	65	P213	5,47
213;HA2313	2-3/16	3	10 3/7	8	2 3/4	1	1 1/9	1	6	2,5591		
213;HE2313	2-1/4											
213;HS2313	2-3/8											
UKP215;H2315	65	82,6	275	217	74	25	28	28	162	73	P215	6,84
215;HA2315	2-7/16	3 1/4	10 5/6	8 1/2	3	1	1 1/9	1 1/9	6 3/8	2,8740		
215;HE2315	2-1/2											
UKP216;H2316	70	88,9	292	232	78	25	28	30	174	78	P216	8,29
216;HA2316	2-11/16	3 1/2	11 1/2	9 1/7	3	1	1 1/9	1 1/6	6 6/7	3,0709		
216;HE2316	2-3/4											
UKP217;H2317	75	95,2	310	247	83	25	28	32	185	82	P217	9,97
217;HA2317	2-15/16	3 3/4	12 1/5	9 5/7	3 1/4	1	1 1/9	1 1/4	7 2/7	3,2283		
217;HE2317	3											
UKP218;H2318	80	101,6	327	262	88	27	30	33	198	86	P218	11,89
218;HA2318	3-3/16	4	12 7/8	10 1/3	3 1/2	1	1 1/6	1 2/7	7 4/5	3,3858		

Data Table UCF2 4-Bolt Flange



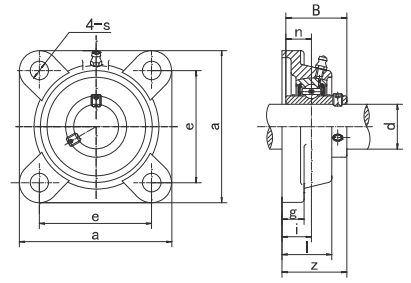
Unit NO.	Dimensions (mm/ in.)											Bolt Size mm/in.	Weight (kg)
	d	a	e	i	g	l	s	z	t	B	n		
UCF201	12	86	64	15	12	25,5	12	33,3	37,5	31	12,7	M10	0,59
201-8	1/2	3 2/5	2 1/2	3/5	1/2	1	1/2	1 1/3	1 1/2	1,2205	0,5000	3/8	0,58
UCF202	15	86	64	15	12	25,5	12	33,3	37,5	31	12,7	M10	0,58
202-9	9/16	3 2/5	2 1/2	3/5	1/2	1	1/2	1 1/3	1 1/2	1,2205	0,5000	3/8	0,58
202-10	5/8	3 2/5	2 1/2	3/5	1/2	1	1/2	1 1/3	1 1/2	1,2205	0,5000	3/8	0,58
UCF203	17	86	64	15	12	25,5	12	33,3	37,5	31	12,7	M10	0,57
203-11	11/16	3 2/5	2 1/2	3/5	1/2	1	1/2	1 1/3	1 1/2	1,2205	0,5000	3/8	0,56
UCF204	20	86	64	15	12	25,5	12	33,3	37,5	31	12,7	M10	0,55
204-12	3/4	3 2/5	2 1/2	3/5	1/2	1	1/2	1 1/3	1 1/2	1,2205	0,5000	3/8	0,55
UCF205	25	95	70	16	14	27	12	35,8	40	34,1	14,3	M10	0,73
205-13	13/16												0,77
205-14	7/8												0,76
205-15	15/16	3 3/4	2 3/4	5/8	5/9	1	1/2	1 2/5	1 4/7	1,3425	0,5630	3/8	0,74
205-16	1												0,73
UCF206	30	108	83	18	14	31	12	40,2	44,5	38,1	15,9	M10	1,02
206-17	1-1/16												1,03
206-18	1-1/8												1,04
206-19	1-3/16	4 1/4	3 1/4	5/7	5/9	1 2/9	1/2	1 4/7	1 3/4	1,5000	0,6260	3/8	1,02
206-20	1-1/4												1,01
UCF207	35	117	92	19	16	34	14	44,4	48,5	42,9	17,5	M12	1,33
207-20	1-1/4												1,40
207-21	1-5/16	4 3/5	3 5/8	3/4	5/8	1 1/3	5/9	1 3/4	2	1,6890	0,6890	7/16	1,37
207-22	1-3/8												1,34
207-23	1-7/16												1,31
UCF208	40	130	102	21	16	36	16	51,2	55,5	49,2	19	M14	1,67
208-24	1-1/2												1,71
208-25	1-9/16	5 1/8	4	5/6	5/8	1 3/7	5/8	2	2 1/5	1,9370	0,7480	1/2	1,68
UCF209	45	137	105	22	18	38	16	52,2	56,5	49,2	19	M14	2,00
209-26	1-5/8												2,10
209-27	1-11/16	5 2/5	4 1/7	6/7	5/7	1 1/2	5/8	2	2 2/9	1,9370	0,7480	1/2	2,06
209-28	1-3/4												2,02
UCF210	50	143	111	22	18	40	16	54,6	59,5	51,6	19	M14	2,32
210-29	1-13/16												2,44
210-30	1-7/8												2,39
210-31	1-15/16	5 5/8	4 3/8	6/7	5/7	1 4/7	5/8	2 1/7	2 1/3	2,0315	0,7480	1/2	2,34
210-32	2												2,30
UCF211	55	162	130	25	20	43	19	58,4	63	55,6	22,2	M16	3,12
211-32	2												3,27
211-33	2-1/16												3,21
211-34	2-1/8	6 3/8	5 1/8	1	4/5	1 2/3	3/4	2 2/7	2 1/2	2,1890	0,8740	5/8	3,17
211-35	2-3/16												3,10
UCF212	60	175	143	29	20	48	19	68,7	73,5	65,1	25,4	M16	3,95
212-36	2-1/4												4,08
212-37	2-5/16												4,00
212-38	2-3/8	6 8/9	5 5/8	1 1/7	4/5	1 8/9	3/4	2 5/7	2 8/9	2,5630	1,0000	5/8	3,93
212-39	2-7/16												3,86
UCF213	65	187	149	30	22	50	19	69,7	74,5	65,1	25,4	M16	4,81
213-40	2-1/2												4,90
213-41	2-9/16	7 1/3	5 6/7	1 1/6	6/7	2	3/4	2 3/4	3	2,5630	1,0000	5/8	4,81
UCF214	70	193	152	31	22	54	19	75,4	81,5	74,6	30,2	M16	5,42
214-42	2-5/8												5,63
214-43	2-11/16	7 3/5	6	1 2/9	6/7	2 1/8	3/4	3	3 1/5	2,9370	1,1890	5/8	5,53
214-44	2-3/4												5,43
UCF215	75	200	159	34	22	56	19	78,5	83,5	77,8	33,3	M16	5,94
215-45	2-13/16												5,94
215-46	2-7/8												6,19
215-47	2-15/16	7 7/8	6 1/4	1 1/3	6/7	2 1/5	3/4	3	3 2/7	3,0630	1,3110	5/8	6,08
215-48	3												5,88
UCF216	80	208	165	34	22	58	23	83,3	88,5	82,6	33,3	M20	6,94
216-49	3-1/16												7,12
216-50	3-1/8	8 1/5	6 1/2	1 1/3	6/7	2 2/7	1	3 2/7	3 1/2	3,2520	1,3110	3/4	6,99
216-51	3-3/16												6,86
UCF217	85	220	175	36	24	63	23	87,6	92,6	85,7	34,1	M20	8,67
217-52	3-1/4												8,79
217-53	3-5/16	8 2/3	6 8/9	1 3/7	1	2 1/2	1	3 4/9	3 2/3	3,374	1,3425	3/4	8,75
217-55	3-7/16												8,46
UCF218	90	235	187	40	24	68	23	96,3	101,5	96	39,7	M20	10,62
218-56	3-1/2	9 1/4	7 1/3	1 4/7	1	2 2/3	1	3 4/5	4	3,7795	1,5630	3/4	10,73

Data Table UCF3 4-Bolt Flange



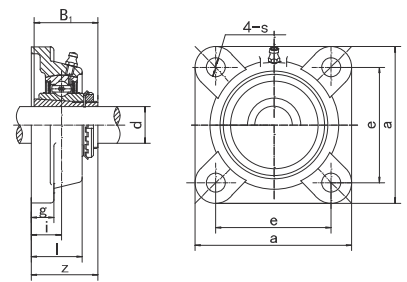
Unit NO.	Dimensions (mm/ in.)										Bolt size mm/in.	Weight (kg)
	d	a	e	i	g	L	S	z	B	n		
UCF305	25	110	80	16	13	29	16	39	38	15	M14	1,10
305-13	13/16	4 1/3	3 1/7	5/8	1/2	1 1/7	5/8	1 1/2	1,4961	0,5906	1/2	
305-14	7/8											
305-15	15/16											
305-16	1											
UCF306	30											125
306-17	1-1/16	5	3 3/4	5/7	3/5	1 1/4	5/8	1 3/4	1,6929	0,6693	1/2	
306-18	1-1/8											
306-19	1-3/16											
UCF307	35											135
307-20	1-1/4	5 1/3	4	4/5	5/8	1 3/7	3/4	2	1,8898	0,748	5/8	
307-21	1-5/16											
307-22	1-3/8											
307-23	1-7/16											
UCF308	40											150
308-24	1-1/2	6	4 2/5	1	2/3	1 4/7	3/4	2 1/5	2,0472	0,748	5/8	
308-25	1-9/16											
UCF309	45											160
309-26	1-5/8	6 2/7	5	1	5/7	1 3/4	3/4	2 1/3	2,2441	0,8661	5/8	
309-27	1-11/16											
309-28	1-3/4											
UCF310	50											175
310-29	1-13/16	6 8/9	5 1/5	1 1/9	3/4	1 8/9	1	2 2/3	2,4016	0,8661	3/4	
310-30	1-7/8											
310-31	1-15/16											
UCF311	55											185
311-32	2	7 2/7	5 1/2	1 1/6	4/5	2	1	2 4/5	2,5984	0,9843	3/4	
311-33	2-1/16											
311-34	2-1/8											
311-35	2-5/16											
UCF312	60											195
312-36	2-1/4	7 2/3	6	1 2/7	6/7	2 1/5	1	3	2,7953	1,0236	3/4	
312-37	2-5/15											
312-38	2-3/8											
312-39	2-7/16											
UCF313	65											208
313-40	2-1/2	8 1/5	6 1/2	1 2/7	6/7	2 2/7	1	3	2,9528	1,1811	3/4	
313-41	2-9/16											
UCF314	70											226
314-42	2-3/8	8 8/9	7	1 3/7	1	2 2/5	1	3 1/5	3,0709	1,2992	7/8	
314-43	2-11/16											
314-44	2-3/4											
UCF315	75	236	184	39	25	66	25	89	86	32	M22	11,00
315-45	2-13/16	9 2/7	7 1/4	1 1/2	1	2 3/5	1	3 1/2	2,4409	1,2598	7/8	
315-46	2-7/8											
315-47	2-15/16											
315-48	3											
UCF316	80											250
316-49	3-1/16	9 5/6	7 5/7	1 1/2	1	2 2/3	1 2/9	3 1/2	3,3858	1,3386	1	
316-50	3-1/8											
316-51	3-3/16											
UCF317	85											260
317-52	3-1/4	10 1/4	8	1 3/4	1	3	1 2/9	4	3,7795	1,5748	1	
317-53	3-5/16											
317-55	3-7/16											
UCF318	90											280
318-55	3-7/16	11	8 1/2	1 3/4	1 1/6	3	1 3/8	4	3,7795	1,5748	1-1/8	
318-56	3-1/2											
UCF319	95											290
319-58	3-5/8	11 3/7	9	2 1/3	1 1/6	3 5/7	1 3/8	4 3/4	4,0551	1,6142	1-1/8	
319-59	3-11/16											
319-60	3-3/4											
UCF320	100											310
320-64	4	12 1/5	9 1/2	2 1/3	1 1/4	3 5/7	1 1/2	5	4,252	1,6535	1-1/4	
UCF322	110	340	266	60	35	96	41	131	117	46	M36	34,90
		13 2/5	10 1/2	2 1/3	1 3/8	3 7/9	1 3/5	5 1/6	4,6063	1,811		

Data Table UCFX 4-Bolt Flange



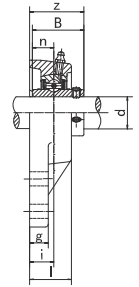
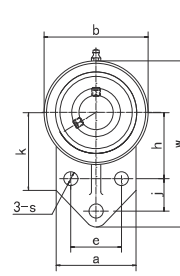
Unit NO.	Dimensions (mm/ in.)										Bolt size mm/in.	Weight (kg)
	d	a	e	i	g	L	S	z	B	n		
UCF305	25	108	83	18	13	30	12	40,2	38,1	15,9	M10	1,10
305-13	13/16	4 1/4	3 1/4	5/7	1/2	1 1/6	1/2	1 4/7	1,5000	0,6260	3/8	
305-14	7/8											
305-15	15/16											
305-16	1											
UCF306	30											117
306-17	1-1/16	4 3/5	3 5/8	3/4	5/9	1 1/3	5/8	1 3/4	1,6890	0,6890	1/2	
306-18	1-1/8											
306-19	1-3/16											
UCF307	35											130
307-20	1-1/4	5 1/8	4	5/6	5/9	1 1/2	5/8	2	1,9370	0,7480	1/2	
307-21	1-5/16											
307-22	1-3/8											
307-23	1-7/16											
UCF308	40											137
308-24	1-1/2	5 2/5	4 1/7	6/7	5/9	1 4/7	3/4	2	1,9370	0,7480	5/8	
308-25	1-9/16											
UCF309	45											143
309-26	1-5/8	5 5/8	4 3/8	1	5/9	1 4/7	3/4	2 1/5	2,0315	0,7480	5/8	
309-27	1-11/16											
309-28	1-3/4											
UCF310	50											162
310-29	1-13/16	6 3/8	5 1/8	1	4/5	1 3/4	3/4	2 1/3	2,1890	0,8740	5/8	
310-30	1-7/8											
310-31	1-15/16											
UCF311	55											175
311-32	2	6 8/9	5 5/8	1 1/7	4/5	2	3/4	2 5/7	2,5630	1,0000	5/8	
311-33	2-1/16											
311-34	2-1/8											
311-35	2-5/16											
UCF312	60											187
312-36	2-1/4	7 1/3	5 6/7	1 1/3	5/6	2 1/3	3/4	3	2,5630	1,0000	5/8	
312-37	2-5/15											
312-38	2-3/8											
312-39	2-7/16											
UCF313	65											187
313-40	2-1/2	7 1/3	5 6/7	1 1/3	5/6	2 1/3	3/4	3	2,9370	1,1890	5/8	
313-41	2-9/16											
UCF314	70											197
314-42	2-3/8	7 3/4	6	1 1/2	1	2 1/3	1	3 1/5	3,0630	1,3110	3/4	
314-43	2-11/16											
314-44	2-3/4											
UCF315	75											197
315-45	2-13/16	7 3/4	6	1 4/7	1	2 2/3	1	3 1/2	3,2520	1,3110	3/4	
315-46	2-7/8											
315-47	2-15/16											
315-48	3											
UCF316	80											214
316-49	3-1/16	8 3/7	6 3/4	1 4/7	1	2 3/4	1	3 3/5	3,3740	1,3425	3/4	
316-50	3-1/8											
316-51	3-3/16											
UCF317	85											214
317-52	3-1/4	8 3/7	6 3/4	1 4/7	1	2 3/4	1	3 4/5	3,7795	1,5630	3/4	
317-53	3-5/16											
317-55	3-7/16											
UCF318	90											214
318-55	3-7/16	8 3/7	6 3/4	1 7/9	1	3	1	4 1/6	4,0945	1,6890	3/4	
318-56	3-1/2											
UCF320	100											268
320-64	4	10 5/9	8 1/3	2 1/3	1 2/9	3 5/6	1 2/9	5	4,6260	1,9370	1	

Data Table UKF2 4-Bolt Flange



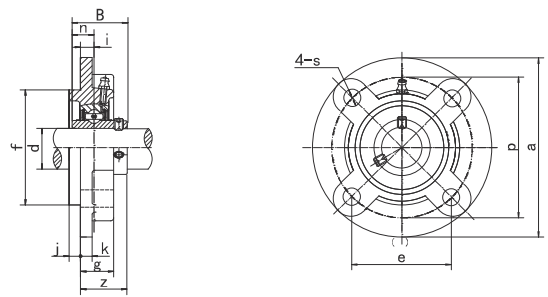
Unit NO.	Dimensions (mm / in.)									Bolt Size mm/in.	Weight (kg)
	d	a	e	i	g	l	s	z	B1		
UKF205;H2305	20	95	70	16	14	27	12	35,5	35	M10	0,78
205;HE2305	3/4	3-3/4	2-3/4	5/8	35/64	1-11/16	15/32	1-25/64	1.378	3/8	
UKF206;H2306	25	108	83	18	14	31	12	39	38	M10	1,09
206;HE2306	1	4-1/4	3-17/64	45/64	35/64	1-7/32	15/32	1-17/32	1.496	3/8	
206;HS2306	7/8										
UKF207;H2307	30	117	92	19	16	34	14	42,5	43	M12	1,41
207;HS2307	1-1/8	4-39/64	3-5/8	3/4	5/8	1-11/32	35/64	1-43/64	1.693	7/16	
UKF208;H2308	35	130	102	21	16	36	16	46,5	46	M14	1,74
208;HE2308	1-1/4	5-1/8	4-1/64	53/64	5/8	1-27/64	5/8	1-53/64	1.811	1/2	
208;HS2308	1-3/8										
UKF209;H2309	40	137	105	22	18	38	16	48,5	50	M14	2,12
209;HA2309	1-7/16	5-13/32	4-9/64	55/64	23/32	1-1/2	5/8	1-29/32	1.969	1/2	
209;HE2309	1-1/2										
209;HS2309	1-5/8										
UKF210;H2310	45	143	111	22	18	40	16	50	55	M14	2,49
210;HA2310	1-11/16	5-5/8	4-3/8	55/64	23/32	1-9/16	5/8	1-31/32	2.165	1/2	
210;HE2310	1-3/4										
210;HS2310	1-5/8										
UKF211;H2311	50	162	130	25	20	43	19	54,5	59	M16	3,28
211;HA2311	1-15/16	6-3/8	5-1/8	63/64	25/32	1-11/16	3/4	2-9/64	2.323	5/8	
211;HE2311	2										
211;HS2311	1-7/8										
UKF212;H2312	55	175	143	29	20	48	19	61	62	M16	4,03
212;HS2312	2-1/8	6-57/64	5-5/8	1-9/64	25/32	1-57/64	3/4	2-13/32	2.441	5/8	
UKF213;H2313	60	187	149	30	22	50	19	64	65	M16	4,93
213;HA2313	2-3/16	7-23/64	5-55/64	1-3/16	55/64	1-31/32	3/4	2-33/64	2.559	5/8	
213;HE2313	2-1/4										
213;HS2313	2-3/8										
UKF215;H2315	65	200	159	34	22	56	19	71	73	M16	6,33
215;HA2315	2-7/16	7-7/8	6-17/64	1-11/32	55/64	2-7/32	3/4	2-51/64	2.874	5/8	
215;HE2315	2-1/2										
UKF216;H2316	70	208	165	34	22	58	23	73,5	78	M20	7,37
216;HA2316	2-11/16	8-3/16	6-1/2	1-11/32	55/64	2-9/32	29/32	2-57/64	3.071	3/4	
216;HE2316	2-3/4										
UKF217;H2317	75	220	175	36	24	63	23	77	82	M20	9,09
217;HA2317	2-15/16	8-21/32	6-57/64	1-27/64	15/16	2-15/32	29/32	3-1/32	3.228	3/4	
217;HE2317	3										
UKF218;H2318	80	235	187	40	24	68	23	81,5	86	M20	10,91
218;HA2318	3-3/16	9-1/4	7-23/64	1-37/64	15/16	2-11/16	29/32	3-13/64	3.386	3/4	

Data Table UCFB2 Pillow Block



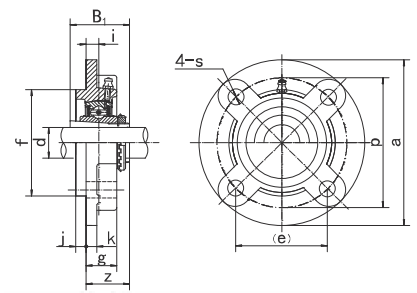
Unit NO.	Dimensions (mm/ in.)														Bolt Size mm/in.	Weight (kg)
	d	w	b	k	a	l	s	g	h	j	e	z	B	n		
UCFB201	12	110	62	52	52	25,5	10	13	42	27	32	33,3	31,0	12,7	M8	0,59
201-8	1/2															0,58
UCFB202	15															0,58
202-9	9/16															0,58
202-10	5/8															0,58
UCFB203	17	116	2 4/9	2	2	1	2/5	1/2	12/3	1	34	1 1/3	12/9	1/2	5/16	0,57
203-11	11/16															0,56
UCFB204	20															0,55
204-12	3/4															0,55
UCFB205	25	116	68	52	56	27	10	13	45	27	34	35,8	34,1	14,3	M8	0,64
205-13	13/16															0,67
205-14	7/8															0,66
205-15	15/16	4 4/7	2 2/3	2	2 1/5	1	2/5	1/2	1 7/9	1	40	1 2/5	1 1/3	4/7	5/16	0,64
205-16	1															0,63
UCFB206	30	130	78	55	65	31	10	13	50	29	40	40,2	38,1	15,9	M8	0,88
206-17	1-1/16															0,89
206-18	1-1/8															0,90
206-19	1-3/16	5 1/8	3	2 1/6	2 5/9	1 2/9	2/5	1/2	2	1 1/7	46	1 4/7	1 1/2	5/8	5/16	0,88
206-20	1-1/4															0,87
UCFB207	35	144	90	62	70	34	10	15	55	32	46	44,4	42,9	17,5	M8	1,24
207-20	1-1/4															1,31
207-21	1-5/16															1,28
207-22	1-3/8	5 2/3	3 1/2	2 4/9	2 3/4	1 1/3	2/5	18	2 1/6	1 1/4	50	1 3/4	1 2/3	2/3	5/16	1,25
207-23	1-7/16															1,22
UCFB208	40	164	100	72	78	36	12	16	60	41	50	51,2	49,2	19	M10	1,66
208-24	1-1/2															1,70
208-25	1-9/16	6 1/2	4	2 5/6	3	1 3/7	1/2	19	2 1/3	1 3/5	54	2	2	3/4	3/8	1,67
UCFB209	45	174	106	76	80	38	12	18	65	43	54	52,2	49,2	19	M10	1,92
209-26	1-5/8															2,02
209-27	1-11/16	6 6/7	4 1/6	3	3 1/7	1 1/2	1/2	20	2 5/9	1 2/3	58	2	2	3/4	3/8	1,98
209-28	1-3/4															1,94
UCFB210	50	184	112	82	86	40	12	18	68	46	58	54,6	51,6	19	M10	2,21
210-29	1-13/16															2,33
210-30	1-7/8															2,38
210-31	1-15/16	7 1/4	4 2/5	3 2/9	3 2/5	1 4/7	1/2	21	2 2/3	1 4/5	62	2 1/7	2	3/4	3/8	2,23
210-32	2															2,19
UCFB211	55	207	130	86	90	43	14	18	78	50	62	58,4	55,6	22,2	M12	3,10
211-32	2															3,25
211-33	2-1/16															3,19
211-34	2-1/8	8 1/7	5 1/8	3 2/5	3 1/2	1 2/3	5/9	22	3	2	66	2 2/7	2 1/5	7/8	7/16	3,15
211-35	2-3/16															3,08
UCFB212	60	223	140	90	94	48	14	18	84	55	66	68,7	65,1	25,4	M12	3,87
212-36	2-1/4															4,00
212-37	2-5/16															3,92
212-38	2-3/8	8 7/9	5 1/2	3 1/2	3 5/7	1 8/9	5/9	25	3 1/3	2 1/6	70	2 5/7	2 4/7	1	7/16	3,85
212-39	2-7/16															3,78
UCFB213	65	244	155	64	100	50	14	20	92	60	70	69,7	65,1	25,4	M12	4,97
213-40	2-1/2															5,06
213-41	2-9/16	9 3/5	6 1/9	2 1/2	4	2	5/9	27	3 5/8	2 1/3	2 3/4	2 3/4	2 4/7	1	7/16	4,97

Data Table UCFC2 Flanged Cartridge



Unit NO.	Dimensions (mm/ in.)														Bolt Size mm/in.	Weight (kg)
	d	a	p	e	i	s	j	k	g	f	z	t	b	n		
UCFC201	12	100	78	55,1	10	12	5	7	20,5	62	28,3	32,5	31,0	12,7	M10	0,70
201-8	1/2	3-15/16	3-5/64	2-11/64	25/64	15/32	13/64	9/32	13/16	2.4409	1-1/8	1-9/32	1.2205	0.500	3/8	0,69
UCFC202	15	100	78	55,1	10	12	5	7	20,5	62	28,3	32,5	31,0	12,7	M10	0,69
202-9	9/16	3-15/16	3-5/64	2-11/64	25/64	15/32	13/64	9/32	13/16	2.4409	1-1/8	1-9/32	1.2205	0.500	3/8	0,69
202-10	5/8															0,69
UCFC203	17	100	78	55,1	10	12	5	7	20,5	62	28,3	32,5	31,0	12,7	M10	0,68
203-11	11/16	3-15/16	3-5/64	2-11/64	25/64	15/32	13/64	9/32	13/16	2.4409	1-1/8	1-9/32	1.2205	0.500	3/8	0,67
UCFC204	20	100	78	55,1	10	12	5	7	20,5	62	28,3	32,5	31,0	12,7	M10	0,66
204-12	3/4	3-15/16	3-5/64	2-11/64	25/64	15/32	13/64	9/32	13/16	2.4409	1-1/8	1-9/32	1.2205	0.500	3/8	0,66
UCFC205	25	115	90	63,6	10	12	6	7	21	70	29,8	34,0	34,1	14,3	M10	0,89
205-13	13/16															0,92
205-14	7/8	4-17/32	3-35/64	2-1/2	25/64	15/32	15/64	9/32	53/64	2.7559	1-11/64	1-11/32	1.3425	0.563	3/8	0,91
205-15	15/16															0,89
205-16	1															0,88
UCFC206	30	125	100	70,7	10	12	8	8	23	80	32,2	36,5	38,1	15,9	M10	1,18
206-17	1-1/16															1,19
206-18	1-1/8	4-59/64	3-15/16	2-25/32	25/64	15/32	5/16	5/16	29/32	3.1496	1-17/64	1-7/16	1.5000	0.626	3/8	1,20
206-19	1-3/16															1,18
206-20	1-1/4															1,17
UCFC207	35	135	110	77,8	11	14	8	9	26	90	36,4	41,0	42,9	17,5	M12	1,53
207-20	1-1/4															1,59
207-21	1-5/16	5-5/16	4-21/64	3-1/16	7/16	35/64	5/16	23/64	1-1/32	3.5433	1-7/16	1-5/8	1.6890	0.689	7/16	1,56
207-22	1-3/8															1,53
207-23	1-7/16															1,50
UCFC208	40	145	120	84,8	11	14	10	9	26	100	41,2	45,5	49,2	19,0	M12	1,85
208-24	1-1/2	5-45/64	4-23/32	3-11/32	7/16	35/64	25/64	23/64	1-1/32	3.9370	1-5/8	1-51/64	1.9370	0.748	7/16	1,89
208-25	1-9/16															1,86
UCFC209	45	160	132	93,3	10	16	12	14	26	105	40,2	44,5	49,2	19,0	M14	2,53
209-26	1-5/8															2,63
209-27	1-11/16	6-19/64	5-13/64	3-43/64	25/64	5/8	15/32	35/64	1-1/32	4.1339	1-37/64	1-3/4	1.9370	0.748	1/2	2,59
209-28	1-3/4															2,55
UCFC210	50	165	138	97,6	10	16	12	14	28	110	42,6	47,5	51,6	19,0	M14	2,78
210-29	1-13/16															2,90
210-30	1-7/8	6-1/2	5-7/16	3-27/32	25/64	5/8	15/32	35/64	1-7/64	4.3307	1-11/16	1-7/8	2.0315	0.748	1/2	2,85
210-31	1-15/16															2,80
210-32	2															2,76
UCFC211	55	185	150	106,1	13	19	12	15	31	125	46,4	51,0	55,6	22,2	M16	3,86
211-32	2															4,01
211-33	2-1/16	7-9/32	5-29/32	4-3/16	33/64	3/4	15/32	19/32	1-7/32	4.9213	1-53/64	2-1/64	2.1890	0.874	5/8	3,95
211-34	2-1/8															3,91
211-35	2-3/16															3,84
UCFC212	60	195	160	113,1	17	19	12	15	36	135	56,7	61,5	65,1	25,4	M16	4,69
212-36	2-1/4															4,82
212-37	2-5/16	7-11/16	6-19/64	4-29/64	43/64	3/4	15/32	19/32	1-27/64	5.3150	2-15/64	2-27/64	2.5630	1.000	5/8	4,74
212-38	2-3/8															4,67
212-39	2-7/16															4,60
UCFC213	65	205	170	120,2	16	19	14	15	36	145	55,7	60,5	65,1	25,4	M16	5,30
213-40	2-1/2	8-5/64	6-11/16	4-47/64	5/8	3/4	35/64	19/32	1-27/64	5.708	1-3/16	2-25/64	2.5630	1.000	5/8	5,39
213-41	2-9/16															5,30
UCFC214	70	215	177	125,1	17	19	14	18	40	150	61,4	67,5	74,6	30,2	M16	6,46
214-42	1-5/8															6,67
214-43	1-11/16	8-15/32	6-31/32	4-59/64	43/64	3/4	35/64	23/32	1-37/64	5.9055	2-13/32	2-21/32	2.9370	1.189	5/8	6,57
214-44	1-3/4															6,47
UCFC215	75	220	184	130,1	18	19	16	18	40	160	62,5	67,5	77,8	33,3	M16	6,86
215-45	2-13/16															6,86
215-46	2-7/8	8-21/32	7-1/4	5-1/8	23/32	3/4	5/8	23/32	1-37/64	6.2992	2-15/32	2-21/32	3.0630	1.311	5/8	7,11
215-47	2-15/16															7,00
215-48	3															6,80
UCFC216	80	240	200	141,4	18	23	16	18	42	170	67,3	72,5	82,6	33,3	M20	8,47
216-49	3-1/16															8,65
216-50	3-1/8	9-29/64	7-7/8	5-9/16	23/32	29/32	5/8	23/32	1-21/32	6.6929	2-21/32	2-55/64	3.2520	1.311	3/4	8,52
216-51	3-3/16															8,39
UCFC217	85	250	208	147,1	18	23	18	20	45	180	69,6	74,6	85,7	34,1	M20	10,18
217-52	3-1/4															10,30
217-53	3-5/16	9-27/32	8-3/16	5-51/64	23/32	29/32	23/32	25/32	1-25/32	7.0866	2-3/4	2-15/16	3.3740	1.343	3/4	10,26
217-55	3-7/16															9,97
UCFC218	90	265	220	155,5	22	23	18	20	50	190	78,3	83,5	96,0	39,7	M20	12,24
218-56	3-1/2	10-7/16	8-21/32	6-1/8	55/64	29/32	23/32	25*32	1-31/32	7.4803	3-3/32	3-9/32	3.7795	1.5630	3/4	12,35

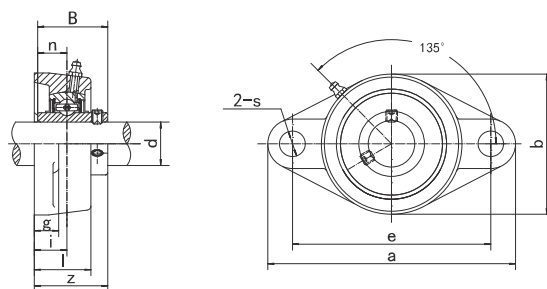
Data Table UKFC2 Flanged Cartridge



Unit NO.	Dimensions (mm / in.)												Bolt Size mm/in.	Weight (kg)
	d	a	p	e	i	s	j	k	g	f	z	B1		
UKFC205;H2305	20	115	90	63,6	10	12	6	7	21	70	29,5	35	M10	0,93
205;HE2305	3/4	4-17/32	3-35/64	2-1/2	25/64	15/32	15/64	9/32	53/64	2.7559	1-5/32	1.378	3/8	
UKFC206;H2306	25	125	100	70,7	10	12	8	8	23	80	31	38	M10	1,24
206;HE2306	1	4-59/64	3-15/16	2-25/32	25/64	15/32	5/16	5/16	29/32	3.1496	1-7/32	1.496	3/8	
206;HS2306	7/8													
UKFC207;H2307	30	135	110	77,8	11	14	8	9	26	90	33,5	43	M12	1,60
207;HS2307	1-1/8	5-5/16	4-21/64	3-1/16	7/16	35/64	5/16	23/64	1-1/32	3.5433	1-5/16	1.693	7/16	
UKFC208;H2308	35	145	120	84,8	11	14	10	9	26	100	35,5	46	M12	1,92
208;HE2308	1-1/4	5-45/64	4-23/32	3-11/32	7/16	35/64	25/64	23/64	1-1/32	3.9370	1-25/64	1.811	7/16	
208;HS2308	1-3/8													
UKFC209;H2309	40	160	132	93,3	10	16	12	14	26	105	36	50	M14	2,65
209;HA2309	1-7/16	6-19/64	5-13/64	3-43/64	25/64	5/8	15/32	35/64	1-1/32	4.1339	1-27/64	1.969	1/2	
209;HE2309	1-1/2													
209;HS2309	1-5/8													
UKFC210;H2310	45	165	138	97,6	10	16	12	14	28	110	37,5	55	M14	2,96
210;HA2310	1-11/16	6-1/2	5-7/16	3-27/32	25/64	5/8	15/32	35/64	1-7/64	4.3307	1-15/32	2.165	1/2	
210;HE2310	1-3/4													
210;HS2310	1-5/8													
UKFC211;H2311	50	185	150	106,1	13	19	12	15	31	125	41,5	59	M16	4,02
211;HA2311	1-15/16	7-9/32	5-29/32	4-3/16	33/64	3/4	15/32	19/32	1-7/32	4.9213	1-41/64	2.323	5/8	
211;HE2311	2													
211;HS2311	1-7/8													
UKFC212;H2312	55	195	160	113,1	17	19	12	15	36	135	48	62	M16	4,77
212;HS2312	2-1/8	7-11/16	6-19/64	4-29/64	43/64	3/4	15/32	19/32	1-27/64	5.3150	1-57/64	2.441	5/8	
UKFC213;H2313	60	205	170	120,2	16	19	14	15	36	145	49	65	M16	5,41
213;HA2313	2-3/16	8-5/64	6-11/16	4-47/64	5/8	3/4	35/64	19/32	1-27/64	5.708	1-15/16	2.559	5/8	
213;HE2313	2-1/4													
213;HS2313	2-3/8													
UKFC215;H2315	65	220	184	130,1	18	19	16	18	40	160	53,5	73	M16	7,25
215;HA2315	2-7/16	8-21/32	7-1/4	5-1/8	23/32	3/4	5/8	23/32	1-37/64	6.2992	2-7/64	2.874	5/8	
215;HE2315	2-1/2													
UKFC216;H2316	70	240	200	141,4	18	23	16	18	42	170	57	78	M20	8,90
216;HA2316	2-11/16	9-29/64	7-7/8	5-9/16	23/32	29/32	5/8	23/32	1-21/32	6.6929	2-1/4	3.071	3/4	
216;HE2316	2-3/4													
UKFC217;H2317	75	250	208	147,1	18	23	18	20	45	180	59	82	M20	10,60
217;HA2317	2-15/16	9-27/32	8-3/16	5-51/64	23/32	29/32	23/32	25/32	1-25/32	7.0866	2-21/64	3.228	3/4	
217;HE2317	3													
UKFC218;H2318	80	265	220,0	155,5	22	23	18	20	50	190	64,5	86	M20	12,54
218;HA2318	3-3/16	10-7/16	8-21/32	6-1/8	55/64	29/32	23/32	25/32	1-31/32	7.4803	3-35/64	3.386	3/4	

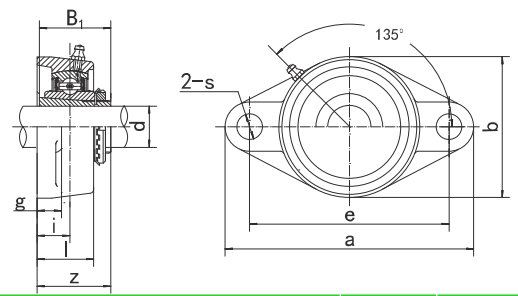
Data Table UCFL2

2-Bolt Flange



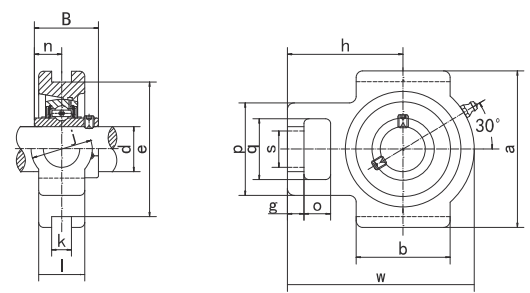
Unit NO.	Dimensions (mm/ in.)											Bolt Size mm/in.	Weight (kg)
	d	a	e	i	g	l	s	b	z	B	n		
UCFL201	12	113	90	15	11	25,5	12	60	33,3	31,0	12,7	M10	0,45
201-8	1/2	4-7/16	3-35/64	19/32	7/16	1	15/32	2-3/8	1-5/16	1.2205	0.500	3/8	0,44
UCFL202	15	113	90	15	11	25,5	12	60	33,3	31,0	12,7	M10	0,44
202-9	9/16	4-7/16	3-35/64	19/32	7/16	1	15/32	2-3/8	1-5/16	1.2205	0.500	3/8	0,44
202-10	5/8	4-7/16	3-35/64	19/32	7/16	1	15/32	2-3/8	1-5/16	1.2205	0.500	3/8	0,44
UCFL203	17	113	90	15	11	25,5	12	60	33,3	31,0	12,7	M10	0,43
203-11	11/16	4-7/16	3-35/64	19/32	7/16	1	15/32	2-3/8	1-5/16	1.2205	0.500	3/8	0,42
UCFL204	20	113	90	15	11	25,5	12	60	33,3	31,0	12,7	M10	0,40
204-12	3/4	4-7/16	3-35/64	19/32	7/16	1	15/32	2-3/8	1-5/16	1.2205	0.500	3/8	0,40
UCFL205	25	130	99	16	13	27	16	68	35,8	34,1	14,3	M14	0,58
205-13	13/16												0,62
205-14	7/8												0,61
205-15	15/16	5-1/8	3-57/64	5/8	1/2	1-1/16	5/8	2-11/16	1-13/32	1.3425	0.563	1/2	0,59
205-16	1												0,58
UCFL206	30	148	117	18	13	31	16	80	40,2	38,1	15,9	M14	0,83
206-17	1-1/16												0,84
206-18	1-1/8												0,85
206-19	1-3/16	5-13/16	4-39/64	45/64	1/2	1-7/32	5/8	3-5/32	1-19/32	1.5000	0.626	1/2	0,83
206-20	1-1/4												0,82
UCFL207	35	161	130	19	14	34	16	90	44,4	42,9	17,5	M14	1,10
207-20	1-1/4												1,16
207-21	1-5/16												1,13
207-22	1-3/8	6-11/32	5-1/8	3/4	35/64	1-11/32	5/8	3-35/64	1-3/4	1.6890	0.689	1/2	1,10
207-23	1-7/16												1,07
UCFL208	40	175	144	21	14	36	16	100	51,2	49,2	19,0	M14	1,42
208-24	1-1/2	6-7/8	5-43/64	53/64	35/64	1-13/32	5/8	3-15/16	2-1/64	1.9370	0.748	1/2	1,46
208-25	1-9/16												1,43
UCFL209	45	188	148	22	15	38	19	108	52,2	49,2	19,0	M16	1,75
209-26	1-5/8												1,85
209-27	1-11/16	7-13/32	5-53/64	55/64	19/32	1-1/2	3/4	4-1/4	2-1/16	1.9370	0.748	5/8	1,81
209-28	1-3/4												1,77
UCFL210	50	197	157	22	15	40	19	115	54,6	51,6	19,0	M16	2,02
210-29	1-13/16												2,14
210-30	1-7/8												2,09
210-31	1-15/16	7-3/4	6-3/16	55/64	19/32	1-37/64	3/4	4-17/32	2-5/32	2.0315	0.748	5/8	2,04
210-32	2												2,00
UCFL211	55	224	184	25	18	43	19	130	58,4	55,6	22,2	M16	2,79
211-32	2												2,94
211-33	2-1/16												2,88
211-34	2-1/8	8-13/16	7-1/4	63/64	23/32	1-11/16	3/4	5-1/8	2-5/16	2.1890	0.874	5/8	2,84
211-35	2-3/16												2,77
UCFL212	60	250	202	29	18	48	23	140	68,7	65,1	25,4	M20	3,65
212-36	2-1/4												3,78
212-37	2-5/16												3,70
212-38	2-3/8	9-27/32	7-61/64	1-9/64	23/32	1-7/8	29/32	5-1/2	2-23/32	2.5630	1.000	3/4	3,63
212-39	2-7/16												3,56
UCFL213	65	258	210	30	22	50	23	155	69,7	65,1	25,4	M20	4,56
213-40	2-1/2												4,65
213-41	2-9/16	10-5/32	8-17/64	1-3/16	7/8	1-31/32	29/32	6-3/32	2-3/4	2.5630	1.000	3/4	4,56
UCFL214	70	265	216	31	22	54	23	160	75,4	74,6	30,2	M20	5,12
214-42	2-5/8												5,33
214-43	2-11/16	10-7/16	8-1/2	1-7/32	7/8	2-1/8	29/32	6-5/16	2-31/32	2.9370	1.189	3/4	5,23
214-44	2-3/4												5,13
UCFL215	75	275	225	34	22	56	23	165	78,5	77,8	33,3	M20	5,64
215-45	2-13/16												5,61
215-46	2-7/8												5,86
215-47	2-15/16	10-13/16	8-55/64	1-11/32	7/8	2-7/32	29/32	6-1/2	3-3/32	3.0630	1.311	3/4	5,75
215-48	3												5,55
UCFL216	80	290	233	34	22	58	25	180	83,3	82,6	33,3	M22	6,91
216-49	3-1/16												7,09
216-50	3-1/8	11-13/32	9-11/64	1-11/32	7/8	2-9/32	63/64	7-3/32	3-9/32	3.2520	1.311	7/8	6,96
216-51	3-3/16												6,83
UCFL217	85	305	248	36	24	63	25	190	87,5	85,7	34,1	M22	8,27
217-52	3-1/4												8,39
217-53	3-5/16	12	9-49/64	1-27/64	15/16	2-15/32	63/64	7-15/32	3-7/16	3.3740	1.343	7/8	8,35
217-55	3-7/16												8,06
UCFL218	90	320	265	40	24	68	25	205	96,3	96,0	39,7	M22	10,13
218-56	3-1/2	12-19/32	10-7/16	1-37/64	15/16	2-11/16	63/64	8-1/16	3-25/32	3.7795	1.5630	7/8	10,24

Data Table UKFL2 2-Bolt Flange



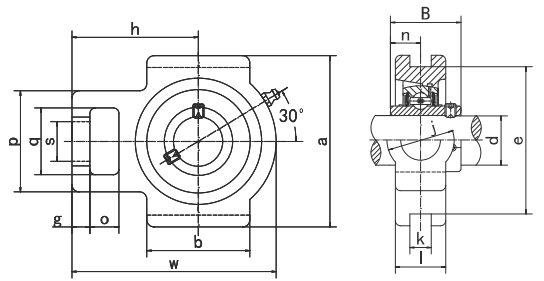
Unit NO.	Dimensions (mm / in.)										Bolt Size mm/in.	Weight (kg)
	d	a	e	i	g	l	s	b	z	B1		
UKFL205;H2305	20	130	99	16	13	27	16	68	35,5	35	M14	0,63
205;HE2305	3/4	5-1/8	3-57/64	5/8	1/2	1-1/16	5/8	2-11/16	1-25/64	1.378	1/2	
UKFL206;H2306	25	148	117	18	13	31	16	80	39	38	M14	0,89
206;HE2306	1	5-13/16	4-39/64	45/64	1/2	1-7/32	5/8	3-5/32	1-17/32	1.496	1/2	
206;HS2306	7/8											
UKFL207;H2307	30	161	130	19	14	34	16	90	42,5	43	M14	1,17
207;HS2307	1-1/8	6-11/32	5-1/8	3/4	35/64	1-11/32	5/8	3-35/64	1-43/64	1.693	1/2	
UKFL208;H2308	35	175	144	21	14	36	16	100	46,5	46	M14	1,49
208;HE2308	1-1/4	6-7/8	5-43/64	53/64	35/64	1-13/32	5/8	3-15/16	1-53/64	1.811	1/2	
208;HS2308	1-3/8											
UKFL209;H2309	40	188	148	22	15	38	19	108	48,5	50	M16	1,87
209;HA2309	1-7/16	7-13/32	5-53/64	55/64	19/32	1-1/2	3/4	4-1/4	1-29/32	1.969	5/8	
209;HE2309	1-1/2											
209;HS2309	1-5/8											
UKFL210;H2310	45	197	157	22	15	40	19	115	50	55	M16	2,19
210;HA2310	1-11/16	7-3/4	6-3/16	55/64	19/32	1-37/64	3/4	4-17/32	1-31/32	2.165	5/8	
210;HE2310	1-3/4											
210;HS2310	1-5/8											
UKFL211;H2311	50	224	184	25	18	43	19	130	54,5	59	M16	2,95
211;HA2311	1-15/16	8-13/16	7-1/4	63/64	23/32	1-11/16	3/4	5-1/8	2-9/64	2.323	5/8	
211;HE2311	2											
211;HS2311	1-7/8											
UKFL212;H2312	55	250	202	29	18	48	23	140	61	62	M20	3,73
212;HS2312	2-1/8	9-27/32	7-61/64	1-9/64	23/32	1-7/8	29/32	5-1/2	2-13/32	2.441	3/4	
UKFL213;H2313	60	258	210	30	22	50	23	155	64	65	M20	4,67
213;HA2313	2-3/16	10-5/32	8-17/64	1-3/16	7/8	1-31/32	29/32	6-3/32	2-33/64	2.559	3/4	
213;HE2313	2-1/4											
213;HS2313	2-3/8											
UKFL215;H2315	65	275	225	34	22	56	23	165	71	73	M20	6,00
215;HA2315	2-7/16	10-13/16	8-55/64	1-11/32	7/8	2-7/32	29/32	6-1/2	2-51/64	2.874	3/4	
215;HE2315	2-1/2											
UKFL216;H2316	70	290	233	34	22	58	25	180	73,5	78	M22	7,34
216;HA2316	2-11/16	11-13/32	9-11/64	1-11/32	7/8	2-9/32	63/64	7-3/32	2-57/64	3.071	7/8	
216;HE2316	2-3/4											
UKFL217;H2317	75	305	248	36	24	63	25	190	77	82	M22	8,68
217;HA2317	2-15/16	12	9-49/64	1-27/64	15/16	2-15/32	63/64	7-15/32	3-1/32	3.228	7/8	
217;HE2317	3											
UKFL218;H2318	80	320	265	40	24	68	25	205	81,5	86	M22	10,43
218;HA2318	3-3/16	12-19/32	10-7/16	1-37/64	15/16	2-11/16	63/64	8-1/16	3-13/64	3.386	7/8	

Data Table UCT2 Take-Up Units



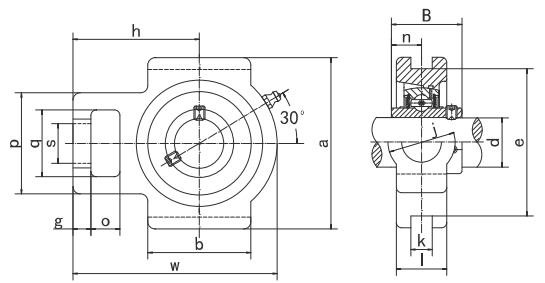
Unit NO.	Dimensions (mm/ in.)																Weight (kg)
	d	o	g	p	q	s	b	k	e	a	w	j	l	h	B1	n	
UCT201	12	16	10	51	32	19	51	12	76	89	94	32	21	61	31	12,7	0,77
201-8	1/2																0,76
UCT202	15																0,76
202-9	9/16																0,76
202-10	5/8	5/8	5/9	5/10	5/11	5/12	5/13	5/14	5/15	5/16	5/17	5/18	5/19	5/20	5/22	5/23	0,76
UCT203	17																0,75
203-11	11/16																0,74
UCT204	20																0,73
204-12	3/4																0,73
UCT205	25	16	10	51	32	19	51	12	76	89	97	32	24	62	34,1	14,3	0,80
205-13	13/16																0,84
205-14	7/8																0,83
205-15	15/16	25/63	25/64	2-1/64	1-1/4	3/4	2-1/64	15/32	2-63/64	3-1/2	3-13/16	1-1/4	15/16	2-7/16	1.3425	0.563	0,81
205-16	1																0,80
UCT206	30	16	10	56	37	22	57	12	89	102	113	37	28	70	38,1	15,9	1,22
206-17	1-1/16																1,23
206-18	1-1/8																1,24
206-19	1-3/16	5/8	25/64	2-7/32	1-29/64	55/64	2-1/4	15/32	3-1/2	4-1/64	4-29/64	1-29/64	1-3/32	2-3/4	1.5000	0.626	1,22
206-20	1-1/4																1,21
UCT207	35	16	13	64	37	22	64	12	89	102	129	37	30	78	42,9	17,5	1,57
207-20	1-1/4																1,63
207-21	1-5/16																1,60
207-22	1-3/8	5/8	33/64	2-33/64	1-29/64	55/64	2-33/64	15/32	3-1/2	4-1/64	5-5/64	1-29/64	1-3/16	3-5/64	1.6890	0.689	1,57
207-23	1-7/16																1,54
UCT208	40	19	16	83	49	29	83	16	102	114	144	49	33	89	49,2	19	2,31
208-24	1-1/2	3/4	5/8	3-17/64	1-15/16	1-9/64	3-17/64	5/8	4-1/64	4-31/64	5-43/64	1-15/16	1-19/64	3-1/2	1.9370	0.748	2,35
208-25	1-9/16																2,32
UCT209	45	19	16	83	49	29	83	16	102	117	144	49	35	87	49,2	19	2,34
209-26	1-5/8																2,44
209-27	1-11/16	3/4	5/8	3-17/64	1-15/16	1-9/64	3-17/64	5/8	4-1/64	4-39/64	5-43/64	1-15/16	1-3/8	3-27/64	1.9370	0.748	2,40
209-28	1-3/4																2,36
UCT210	50	19	16	83	49	29	86	16	102	117	149	49	37	90	51,6	19	2,47
210-29	1-13/16																2,59
210-30	1-7/8																2,54
210-31	1-15/16	3/4	5/8	3-17/64	1-15/16	1-9/64	3-17/64	5/8	4-1/64	4-39/64	5-55/64	1-15/16	1-29/64	3-35/64	2.0315	0.748	2,49
210-32	2																2,45
UCT211	55	25	19	102	64	35	95	22	130	146	171	64	38	106	55,6	22,2	3,74
211-32	2																3,89
211-33	2-1/16	63/64	3/4	4-1/64	2-33/64	1-3/8	3-3/4	55/64	5-1/8	5-3/4	6-47/64	2-33/64	1-1/2	4-11/64	2.1890	0.874	3,83
211-34	2-1/8																3,79
211-35	2-3/16																3,72
UCT212	60	32	19	102	64	35	102	22	130	146	194	64	42	119	65,1	25,4	4,58
212-36	2-1/4																4,71
212-37	2-5/16	1-17/64	3/4	4-1/64	2-33/64	1-3/8	4-1/64	55/64	5-1/8	5-3/4	7-41/64	2-33/64	1-21/32	4-11/16	2.5630	1.000	4,63
212-38	2-3/8																4,56
212-39	2-7/16																4,49
UCT213	65	32	21	111	70	41	121	26	151	167	224	70	44	137	65,1	25,4	6,60
213-40	2-1/2	1-17/64	53/64	4-3/8	2-3/4	1-39/64	4-49/64	1-1/32	5-15/16	6-37/64	8-13/16	2-3/4	1-23/32	5-25/64	2.5630	1.000	6,69
213-41	2-9/16																6,60
UCT214	70	32	21	111	70	41	121	26	151	167	224	70	46	137	74,6	30,2	6,74
214-42	2-5/8																6,95
214-43	2-11/16	1-17/64	53/64	4-3/8	2-3/4	1-39/64	4-49/64	1-1/32	5-15/16	6-37/64	8-13/16	2-3/4	1-13/16	5-25/64	2.937	1.189	6,85
214-44	2-3/4																6,75
UCT215	75	32	21	111	70	41	121	26	151	167	232	70	48	140	77,8	33,3	7,19
215-45	2-13/16																7,19
215-46	2-7/8																7,44
215-47	2-15/16	1-17/64	53/64	4-3/8	2-3/4	1-39/64	4-49/64	1-1/32	5-15/16	6-37/64	9-9/64	2-3/4	1-57/64	5-33/64	3.0630	1.311	7,33
215-48	3																7,13
UCT216	80	32	21	111	70	41	121	26	165	184	235	70	51	140	82,6	33,3	8,08
216-49	3-1/16																8,26
216-50	3-1/8	1-17/64	53/64	4-3/8	2-3/4	1-39/64	4-49/64	1-1/32	6-1/2	7-1/4	9-1/4	2-3/4	2	5-33/64	3.2520	1.311	8,13
216-51	3-3/16																8,00
UCT217	85	38	29	124	73	48	157	30	173	198	260	73	54	162	85,7	34,1	10,66
217-52	3-1/4																10,78
217-53	3-5/16	1-1/2	1-9/64	4-7/8	2-7/8	1-57/64	6-3/16	1-3/16	6-13/16	7-51/64	10-15/64	2-7/8	2-1/8	6-3/8	3.3740	1.343	10,74
217-55	3-7/16																10,45
UCT218	90	40	30	130	80	48	140	30	190	215	275	80	55	170	96	39,7	12,19
218-56	3-1/2	1-37/64	1-3/16	5-1/8	3-5/32	1-57/64	5-35/64	1-3/16	7-31/64	8-15/32	10-53/64	3-5/32	2-11/64	6-11/16	3,7795	1,5630	12,30

Data Table UCT3 Take-Up Units



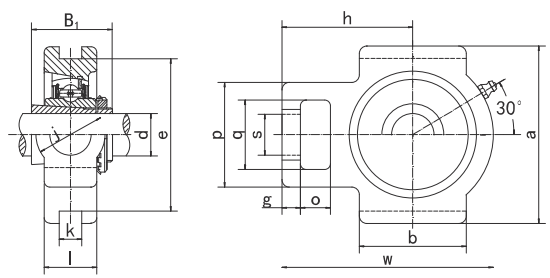
Unit NO.	Dimensions (mm/in.)																Weight (kg)
	d	o	g	p	q	s	b	k	e	a	w	j	l	h	B	n	
UCT305	25	16	14	62	36	26	51	12	80	89	122	36	26	76	38	15	1,20
305-13	13/16	5/8	5/9	2 4/9	1 3/7	1	2	1/2	3 1/7	3 1/2	4 4/5	1 3/7	1	3	1.3425	0.563	
305-14	7/8																
305-15	15/16																
305-16	1	18	16	70	41	28	57	16	90	100	137	41	28	85	43	17	1,70
UCT306	30																
306-17	1-1/16																
306-18	1-1/8																
306-19	1-3/16	20	17	75	45	30	64	16	100	111	150	45	32	94	48	19	2,30
306-20	1-1/4																
UCT307	35																
307-20	1-1/4																
307-21	1-5/16	22	19	83	50	32	83	18	112	124	162	50	34	100	52	19	2,90
307-22	1-3/8																
307-23	1-7/16																
UCT308	40																
308-24	1-1/2	24	20	90	55	34	83	18	125	138	178	55	38	110	57	22	4,00
308-25	1-9/16																
UCT309	45																
309-26	1-5/8																
309-27	1-11/16	27	22	98	61	37	86	20	140	151	192	61	40	118	61	22	5,00
309-28	1-3/4																
UCT310	50																
310-29	1-13/16																
310-30	1-7/8	29	23	105	66	39	95	22	150	163	207	66	44	127	66	25	6,20
310-31	1-15/16																
310-32	2																
UCT311	55																
311-32	2	31	25	113	71	41	102	22	160	178	220	71	46	135	71	26	7,50
311-33	2-1/16																
311-34	2-1/8																
311-35	2-3/16																
UCT312	60	32	27	116	70	43	121	26	170	190	238	80	50	146	75	30	9,30
312-36	2-1/4																
312-37	2-5/16																
312-38	2-3/8																
312-39	2-7/16	36	27	130	85	46	121	26	180	202	252	90	52	155	78	33	10,90
UCT313	65																
313-40	2-1/2																
313-41	2-9/16																
UCT314	70	42	30	150	98	46	121	30	204	230	282	102	60	174	86	34	15,80
314-42	2-5/8																
314-43	2-11/16																
314-44	2-3/4																
UCT315	75	46	33	165	106	57	106	35	240	270	322	110	72	197	103	41	21,00
315-45	2-13/16																
315-46	2-7/8																
315-47	2-15/16																
315-48	3	80	42	150	98	46	121	30	204	230	282	102	60	174	86	34	15,80
UCT316	80																
316-49	3-1/16																
316-50	3-1/8																
316-51	3-3/16	85	42	152	98	53	157	32	214	240	298	102	64	183	96	40	18,60
UCT317	85																
317-52	3-1/4																
317-53	3-5/16																
317-55	3-7/16	90	46	160	106	53	140	32	228	255	312	110	66	192	96	40	21,00
UCT318	90																
318-55	3-1/2																
318-56	1 4/5																
UCF319	95	100	48	175	115	59	115	35	260	290	345	120	75	210	108	42	29,90
319-58	3-5/8																
319-59	3-11/16																
319-60	3-3/4																
UCF320	100	110	52	185	125	65	65	38	285	320	385	130	80	235	117	46	39,49
320-64	4																
UCT322	110																
322-64	2																
UCF324	120	130	65	45	220	150	75	50	350	385	465	150	100	285	135	54	68,40
324-64	60																
UCT326	130																
326-64	2 1/3																
UCF328	140	140	70	50	230	160	80	50	380	415	515	155	100	315	145	59	82,90
328-64	70																
UCT328	140																
328-64	2 3/4																

Data Table UCTX Take-Up Units



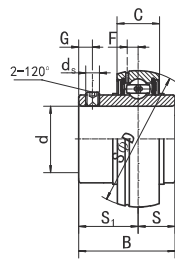
Unit NO.	Dimensions (mm/ in.)																Weight (kg)
	d	o	g	p	q	s	b	k	e	a	w	j	l	h	B	n	
UCTX05	25	16	12	56	37	22	57	12	89	102	113	28	37	70	38,1	15,9	1,30
X05-13	13/16	5/8	1/2	2 1/5	1 1/2	6/7	2 1/4	1/2	3 1/2	4	4 4/9	1 1/9	1 1/2	2 3/4	1 1/2	5/8	
X05-14	7/8																
X05-15	15/16																
X05-16	1																
UCTX06	30	16	15	64	37	22	64	12	89	102	129	30	37	78	42,9	17,5	1,60
X06-17	1-1/16	5/8	3/5	2 1/2	1 1/2	6/7	2 1/2	1/2	3 1/2	4	5	1 1/6	1 1/2	3	1 2/3	2/3	
X06-18	1-1/8																
X06-19	1-3/16																
X06-20	1-1/4																
UCTX07	35	19	17	83	49	29	83	16	102	114	144	36	49	88	49,2	19	2,60
X07-20	1-1/4	3/4	2/3	3 1/4	2	1 1/7	3 1/4	5/8	4	4 1/2	5 2/3	1 3/7	2	3 1/2	2	3/4	
X07-21	1-5/16																
X07-22	1-3/8																
X07-23	1-7/16																
UCTX08	40	19	17	83	49	29	83	16	102	117	144	36	49	87	49,2	19	2,50
X08-24	1-1/2	3/4	2/3	3 1/4	2	1 1/7	3 1/4	5/8	4	4 3/5	5 2/3	1 3/7	2	3 3/7	2	3/4	
X08-25	1-9/16																
UCTX09	45	19	18	83	49	29	86	16	102	117	151	38	49	92	51,6	19	2,70
X09-26	1-5/8	3/4	5/7	3 1/4	2	1 1/7	3 2/5	5/8	4	4 3/5	6	1 1/2	2	3 5/8	2	3/4	
X09-27	1-11/16																
X09-28	1-3/4																
X09-29	1-13/16																
UCTX10	50	25	21	102	64	35	95	22	130	146	171	42	64	106	55,6	22,2	4,20
X10-30	1-7/8	1	5/6	4	2 1/2	1 3/8	3 3/4	6/7	5 1/8	5 3/4	6 3/4	1 2/3	2 1/2	4 1/6	2 1/5	7/8	
X10-31	1-15/16																
X10-32	2																
UCTX11	55	32	21	102	64	35	102	22	130	146	194	44	64	119	65,1	25,4	4,90
X11-33	2-1/16	1 1/4	5/6	4	2 1/2	1 3/8	4	6/7	5 1/8	5 3/4	7 2/3	1 3/4	2 1/2	4 2/3	2 4/7	1	
X11-34	2-1/8																
X11-35	2-3/16																
X11-36	2-1/4																
X11-37	2-5/16																
UCTX12	60	32	23	111	70	41	121	26	151	146	224	48	70	137	65,1	25,4	7,30
X12-38	2-3/8	1 1/4	1	4 3/8	2 3/4	1 3/5	4 3/4	1	6	5 3/4	8 5/6	1 8/9	2 3/4	5 2/5	2 4/7	1	
X12-39	2-7/16																
UCTX13	65	32	23	111	70	41	121	26	151	167	224	48	70	137	74,6	30,2	7,10
X13-40	2-1/2	1 1/4	1	4 3/8	2 3/4	1 3/5	4 3/4	1	6	6 4/7	8 5/6	1 8/9	2 3/4	5 2/5	3	1 1/5	
X13-41	2-9/16																
UCTX14	70	32	23	111	70	41	121	26	151	167	232	48	70	140	77,8	33,3	7,30
X14-42	2-5/8	1 1/4	1	4 3/8	2 3/4	1 3/5	4 3/4	1	6	6 4/7	9 1/7	1 8/9	2 3/4	5 1/2	3	1 1/3	
X14-43	2-11/16																
X14-44	2-3/4																
UCTX15	75	32	23	111	70	41	121	28	165	184	235	48	70	140	82,6	33,3	8,00
X15-45	2-13/16	1 1/4	1	4 3/8	2 3/4	1 3/5	4 3/4	1 1/9	6 1/2	7 1/4	9 1/4	1 8/9	2 3/4	5 1/2	3 1/4	1 1/3	
X15-46	2-7/8																
X15-47	2-15/16																
X15-48	3																
UCTX16	80	38	30	124	73	48	157	28	173	198	260	54	73	162	85,7	34,1	11,40
X16-49	3-1/16	1 1/2	1 1/6	4 7/8	2 7/8	1 8/9	6 1/6	1 1/9	6 4/5	7 4/5	10 1/4	2 1/8	2 7/8	6 3/8	3 3/8	1 1/3	
X16-50	3-1/8																
X16-51	3-3/16																
X16-52	3-1/4																
UCTX17	85	38	30	124	73	48	157	28	173	198	260	54	73	162	96	39,7	11,30
X17-53	3-5/16	1 1/2	1 1/6	4 7/8	2 7/8	1 8/9	6 1/6	1 1/9	6 4/5	7 4/5	10 1/4	2 1/8	2 7/8	6 3/8	3 7/9	1 4/7	
X17-55	3-7/16																

Data Table UKT2 Take-Up Units

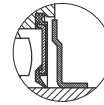


Unit NO.	Dimensions (mm/ in.)															Weight (kg)
	d	o	g	p	q	s	b	k	e	a	w	j	l	h	B1	
UKT205;H2305	20	16	10	51	32	19	51	12	76	89	97	32	24	62	35	0,86
205;HE2305	3/4	5/8	25/64	2-1/64	1-1/4	3/4	2-1/64	15/32	2-63/64	3-1/2	3-13/16	1-1/4	15/16	2-7/16	1.378	
UKT206;H2306	25	16	10	56	37	22	57	12	89	102	113	37	28	70	38	1,26
206;HE2306	1	5/8	25/64	2-7/32	1-29/64	55/64	2-1/4	15/32	3-1/2	4-1/64	4-29/64	1-29/64	1-3/32	2-3/4	1.496	
206;HS2306	7/8															
UKT207;H2307	30	16	13	64	37	22	64	12	89	102	129	37	30	78	43	2,50
207;HS2307	1-1/8	5/8	33/64	2-33/64	1-29/64	55/64	2-33/64	15/32	3-1/2	4-1/64	5-5/64	1-29/64	1-3/16	3-5/64	1.693	
UKT208;H2308	35	19	16	83	49	29	83	16	102	114	144	49	33	89	46	2,50
208;HE2308	1-1/4	3/4	5/8	3-17/64	1-15/16	1-9/64	3-17/64	5/8	4-1/64	4-31/64	5-43/64	1-15/16	1-5/16	3-1/2	1.811	
208;HS2308	1-3/8															
UKT209;H2309	40	19	16	83	49	29	83	16	102	117	144	49	35	87	50	2,51
209;HA2309	1-7/16	3/4	5/8	3-17/64	1-15/16	1-9/64	3-17/64	5/8	4-1/64	4-39/64	5-43/64	1-15/16	1-3/8	3-27/64	1.969	
209;HE2309	1-1/2															
209;HS2309	1-5/8															
UKT210;H2310	45	19	16	83	49	29	86	16	102	117	149	49	37	90	55	2,60
210;HA2310	1-11/16	3/4	5/8	3-17/64	1-15/16	1-9/64	3-25/64	5/8	4-1/64	4-39/64	5-55/64	1-15/16	1-15/32	3-35/64	2.165	
210;HE2310	1-3/4															
210;HS2310	1-5/8															
UKT211;H2311	50	25	19	102	64	35	95	22	130	146	171	64	38	106	59	4,26
211;HA2311	1-15/16	63/64	3/4	4-1/64	2-33/64	1-3/8	3-3/4	55/64	5-1/8	5-3/4	6-47/64	2-33/64	1-1/2	4-11/64	2.323	
211;HE2311	2															
211;HS2311	1-7/8															
UKT212;H2312	55	32	19	102	64	35	102	22	130	146	194	64	42	119	62	5,02
212;HS2312	2-1/8	1-17/64	3/4	4-1/64	2-33/64	1-3/8	4-1/64	55/64	5-1/8	5-3/4	7-41/64	2-33/64	1-21/32	4-11/16	2.441	
UKT213;H2313	60	32	21	111	70	41	121	26	151	167	224	70	44	137	65	6,56
213;HA2313	2-3/16	1-17/64	53/64	4-3/8	2-3/4	1-39/64	4-49/64	1-1/32	5-15/16	6-37/64	8-13/16	2-3/4	1-23/32	5-25/64	2.559	
213;HE2313	2-1/4															
213;HS2313	2-3/8															
UKT215;H2315	65	32	21	111	70	41	121	26	151	167	232	70	48	140	73	7,52
215;HA2315	2-7/16	1-17/64	53/64	4-3/8	2-3/4	1-39/64	4-49/64	1-1/32	5-15/16	6-37/64	9-9/64	2-3/4	1-57/64	5-33/64	2.874	
215;HE2315	2-1/2															
UKT216;H2316	70	32	21	111	70	41	121	26	165	184	235	70	51	140	78	8,56
216;HA2316	2-11/16	1-17/64	53/64	4-3/8	2-3/4	1-39/64	4-49/64	1-1/32	6-1/2	7-1/4	9-1/4	2-3/4	2	5-33/64	3.071	
216;HE2316	2-3/4															
UKT217;H2317	75	38	29	124	73	48	157	30	173	198	260	73	54	162	82	11,38
217;HA2317	2-15/16	1-1/2	1-9/64	4-7/8	2-7/8	1-57/64	6-3/16	1-3/16	6-13/16	7-51/64	10-15/64	2-7/8	2-1/8	6-3/8	3.288	
217;HE2317	3															

Data Table UC2 Bearing Insert



Seal options



SL Dual seal
(Standard)



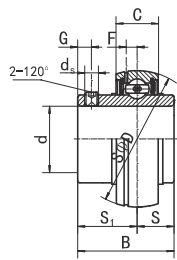
L₃ Triple-lip seal
(Optional)



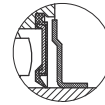
F seal
(Optional)

UnitNO.	Dimensions(mm/in.)									Dynamic loadN	Static loadN	Weight (kg)
	d	D	B	C	S	S ₁	G	D _s	F			
UCS201	12	40	27,4	14	11,5	15,9	4	M5x0,8	3,4	9600	4600	0,12
201-8	1/2											0,12
UCS202	15											0,11
202-9	9/16	1.5748	1.0787	0.5512	0.4528	0.626	0.157	10#-32	0,134	12800	6600	0,11
202-10	5/8											0,11
UCS203	17											0,10
203-11	11/16									0,10		
UC201	12	47	31	17	12,7	18,3	4,8	M6x1	4,3	12800	6600	0,20
201-8	1/2											0,19
UC202	15											0,19
202-9	9/16	1.8504	1.2205	0.6693	0.500	0.720	0.189	1/4-28UNF	0,169	14000	7850	0,19
202-10	5/8											0,19
UC203	17											0,18
203-11	11/16									0,17		
UC204	20	47	31	17	12,7	18,3	4,8	M6x1	4,3	12800	6600	0,16
204-12	3/4	1.8504	1.2205	0.6693	0.500	0.720	0.189	1/4-28UNF	0,169			0,16
UC205	25	52	34,1	17	14,3	19,8	5	M6x1	4,3			0,19
205-13	13/16									0,23		
205-14	7/8	2.0472	1.3425	0.6693	0.563	0.780	0.197	1/4-28UNF	0,169	14000	7850	0,22
205-15	15/16											0,20
205-16	1											0,19
UC206	30	62	38,1	19	15,9	22,2	5	M6x1	5,2	19450	11250	0,30
206-17	1-1/16											0,31
206-18	1-1/8	2.4409	1.5000	0.7480	0.626	0.874	0.197	1/4-28UNF	0,205			0,32
206-19	1-3/16									0,30		
206-20	1-1/4									0,29		
UC207	35	72	42,9	20	17,5	25,4	7	M8x1	5,7	25700	15200	0,45
207-20	1-1/4											0,51
207-21	1-5/16	2.8346	1.6890	0.7874	0.689	1.000	0.276	5/16-24UNF	0,224			0,48
207-22	1/3/8									0,45		
207-23	1-7/16									0,42		
UC208	40	80	49,2	21	19	30,2	8	M8x1	6,2	29500	18100	0,60
208-24	1-1/2	3.1496	1.9370	0.8268	0.748	1.189	0.315	5/16-24UNF	0,244			0,64
208-25	1-9/16											0,61
UC209	45	85	49,2	22	19	30,2	8	M8x1	6,6	32700	20900	0,65
209-26	1-5/8	3.3465	1.9370	0.8661	0.748	1.189	0.315	5/16-24UNF	0,26			0,75
209-27	1-11/16											0,71
209-28	1-3/4									0,67		
UC210	50	90	51,6	24	19	32,6	10	M10x1	6,5	35000	23200	0,75
210-29	1-13/16											0,87
210-30	1-7/8	3.5433	2.0315	0.9449	0.748	1.283	0.394	3/8-24UNF	0,256			0,82
210-31	1-15/16									0,77		
210-32	2									0,73		
UC211	55	100	55,6	25	22,2	33,4	10	M10x1	7,1	43300	29200	0,99
211-32	2											1,14
211-33	2-1/16	3.9370	2.1890	0.9843	0.874	1.315	0.394	3/8-24UNF	0,280			1,08
211-34	2-1/8									1,07		
211-35	2-3/16									0,97		
UC212	60	110	65,1	27	25,4	39,7	10	M10x1	7,9	477000	32800	1,32
212-36	2-1/4											1,52
212-37	2-5/16	4.3307	2.5630	1.0630	1.000	1.563	0.394	3/8-24UNF	0,311			1,44
212-38	2-3/8									1,37		
212-39	2-7/16									1,30		
UC213	65	120	65,1	28	25,4	39,7	10	M10x1	8,0	57200	40000	1,70
213-40	2-1/2	4.3307	2.5630	1.1024	1.000	1.563	0.394	3/8-24UNF	0,315			1,79
213-41	2-9/16											1,70
UC214	70	125	74,6	29	30,2	44,4	12	M12x1,5	8,3	62100	44800	1,94
214-42	2-5/8	4.9213	2.9370	1.1417	1.189	1.748	0.472	7/16-20UNF	0,327			2,15
214-43	2-11/16											2,05
214-44	2-3/4									1,95		
UC215	75	130	77,8	30	33,3	44,5	12	M12x1,5	8,6	66200	49300	2,16
215-45	2-13/16	5.1181	3.0630	1.1811	1.311	1.752	0.472	7/16-20UNF	0,339			2,16
215-46	2-7/8											2,41
215-47	2-15/16									2,30		
215-48	3									2,10		
UC216	80	140	82,6	32	33,3	49,3	12	M12x1,5	9,0	72600	53300	2,65
216-49	3-1/16											2,83
216-50	3-1/8	5.5118	3.2520	1.2598	1.311	1.9409	0.472	7/16-20UNF	0,354			2,70
216-51	3-3/16									2,57		
UC217	85	150	85,7	34	34,1	51,6	12	M12x1,5	9,8	83300	63700	3,29
217-52	3-1/4	5.9055	3.3740	1.3386	1.341	2.031	0.472	7/16-20UNF	0,386			3,41
217-53	3-5/16											3,37
217-55	3-7/16									3,08		
UC218	90	160	96	36	39,7	56,3	12	M12x1,5	10,8	96000	71100	4,04
218-56	3-1/2	6.2992	3.7795	1.4173	1.5630	2.217	0.472	7/16-20UNF	0,425			4,15
UC220	100	180	108	40	42,0	66,0	16	M14x1,5	13,1			4,56
220-64	4	7.0866	4.252	1.5748	1.654	2.598	0.630	9/16-18UNF	0,516	122000	92800	4,35

Data Table UC3 Bearing Insert



Seal options



SL Dual seal
(Standard)



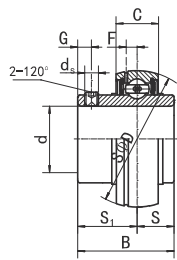
L₃ Triple-lip seal
(Optional)



F seal
(Optional)

Unit NO.	Dimensions (mm/ in.)									Dynamic load N	Static load N	Weight (kg)
	d	D	B	C	S	S1	G	Ds	F			
UC305	25	62	38	20	15	23	6	M6x1	5,4	22400	11500	0,33
305-13	13/16											0,38
305-14	7/8	2,4409	1,4960	0,7874	0,5905	0,9055	0,2362	1/4-28UNF	0,212			0,36
305-15	15/16											0,34
305-16	1											0,33
UC306	30	72	43	23	17	26	6	M6x1	5,7	26500	14900	0,54
306-17	1-1/16											0,59
306-18	1-1/8	2,8346	1,6929	0,9055	0,6692	1,0236	0,2362	1/4-28UNF	0,224			0,56
306-19	1-3/8											0,54
UC307	35	80	48	25	19	29	8	M8x1	6,2			33300
307-20	1-1/4									0,75		
307-21	1-5/16	3,1496	1,8897	0,9842	0,7480	1,1417	0,3149	5/16-24UNF	0,244	0,72		
307-22	1-3/8									0,69		
307-23	1-7/16									0,66		
UC308	40	90	52	27	19	33	10	M10x1	7,0	40600	23700	0,95
308-24	1-1/2	3,5433	2,0472	1,0629	0,7480	1,2992	0,3937	3/8-24UNF	0,276			1,00
308-25	1-9/16											0,96
UC309	45	100	57	30	22	35	10	M10x1	7,8			48600
309-26	1-5/8									1,38		
309-27	1-11/16	3,9370	2,2441	1,1811	0,8661	1,3780	0,3937	3/8-24UNF	0,307	1,34		
309-28	1-3/4									1,29		
UC310	50	110	61	32	22	39	12	M12x1,5	8,5	62000	38000	1,64
310-29	1-13/16											1,98
310-30	1-7/8	4,3307	2,4016	1,2598	0,8661	1,5354	0,4724	1/2-20UNF	0,335			1,73
310-31	1-15/16											1,67
UC311	55	120	66	34	25	41	12	M12x1,5	9,2	71600	44600	2,07
311-32	2											2,25
311-33	2-1/16	4,7244	2,5984	1,3386	0,9843	1,6142	0,4724	1/2-20UNF	0,362			2,18
311-34	2-1/8											2,12
311-35	2-5/16											2,04
UC312	60	130	71	36	26	45	12	M12x1,5	9,8	81600	51800	2,60
312-36	2-1/4											2,75
312-37	2-5/15	5,1181	2,7952	1,4173	1,0236	1,7717	0,4724	1/2-20UNF	0,386			2,67
312-38	2-3/8											2,58
312-39	2-7/16											2,50
UC313	65	140	75	38	30	45	12	M12x1,5	10,5	93700	60400	3,17
313-40	2-1/2	5,5118	2,9527	1,4960	1,1811	1,7716	0,4724	1/2-20UNF	0,413			3,26
313-41	2-9/16											3,16
UC314	70	150	78	40	33	45	12	M12x1,5	11,1	103600	67100	3,79
314-42	2-3/8											4,01
314-43	2-11/16	5,9055	3,0709	1,5748	1,2992	1,7717	0,4724	#VALUE!	0,437			3,90
314-44	2-3/4											3,80
UC315	75	160	82	42	32	50	14	M14x1,5	11,8	112800	75700	4,52
315-45	2-13/16											4,79
315-46	2-7/8	6,2992	3,2283	1,6535	1,2598	1,9685	0,5512	9/16-18UNF	0,465			4,65
315-47	2-15/16											4,56
315-48	3											4,43
UC316	80	170	86	44	34	52	14	M14x1,5	12,5	123500	88200	5,32
316-49	3-1/16											5,49
316-50	3-1/8	6,6929	3,3858	1,7323	1,3386	2,0472	0,5512	9/16-18UNF	0,492			5,35
316-51	3-3/16											5,26
UC317	85	180	96	46	40	56	16	M16x1,5	13,1	133000	97500	6,48
317-52	3-1/4											6,70
317-53	3-5/16	7,0866	3,7795	1,8110	1,5748	2,2047	0,6299	5/8-18UNF	0,516			6,67
317-55	3-7/16											6,45
UC318	90	190	96	48	40	56	16	M16x1,5	13,8	144700	110600	7,33
318-55	3-7/16	7,4803	3,7795	1,8898	1,5748	2,2047	0,6299	5/8-18UNF	0,543			7,62
318-56	3-1/2											7,44
UC319	95	200	103	50	41	62	16	M16x1,5	14,7	155600	122000	8,81
319-58	3-5/8											9,14
319-59	3-11/16	7,8740	4,0551	1,9685	1,6142	2,4409	0,6299	5/8-18UNF	0,579			8,96
319-60	3-3/4											8,77
UC320	100	215	108	54	42	66	18	M18x1,5	15,7	173000	141000	10,71
320-64	4	8,4646	4,2520	2,1260	1,6535	2,5984	0,7087		0,618			10,51
UC322	110	240	117	60	46	71	18	M18x1,5	17,7	205000	179000	14,55
		9,4488	4,6063	2,3622	1,8110	2,7953	0,7087		0,697			

Data Table UCX Bearing Insert

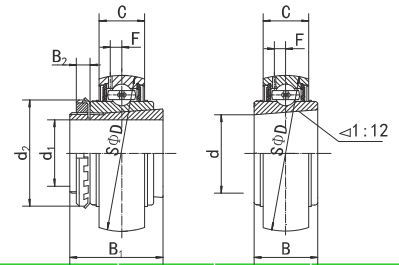


Seal options



Unit NO.	Dimensions (mm / in.)									Dynamic load N	Static load N	Weight (kg)
	d	D	B	C	S	S ₁	G	d _s	F			
UCX05	25	62	38,1	19	15,9	22,2	5	M6x1	5	19450	11250	0,36
X05-13	13/16	2 4/9	1 1/2	3/4	5/8	7/8	1/5	1/4-28UNF	0,197			
X05-14	7/8											
X05-15	15/16											
X05-16	1											
UCX06	30	72	42,9	20	17,5	25,4	7	M8x1	5,7	25700	15200	0,53
X06-17	1-1/16	2 5/6	1 2/3	4/5	2/3	1	2/7	5/16-24UNF	0,224			
X06-18	1-1/8											
X06-19	1-3/16											
UCX07	35	80	49,2	21	19,0	30,2	8	M8x1	6,2	29500	18100	0,70
X07-20	1-1/4	3 1/7	2	5/6	3/4	1 1/5	1/3	5/16-24UNF	0,244			
X07-21	1-5/16											
X07-22	1-3/8											
X07-23	1-7/16											
UCX08	40	85	49,2	22	19,0	30,2	8	M8x1	6,4	32700	20900	0,77
X08-24	1-1/2	3 1/3	2	6/7	3/4	1 1/5	1/3	5/16-24UNF	0,252			
X08-25	1-9/16											
UCX09	45	90	51,6	24	19,0	32,6	10	M10x1	6,5	35000	23200	0,88
X09-26	1-5/8	3 1/2	2	1	3/4	1 2/7	2/5	3/8-24UNF	0,256			
X09-27	1-11/16											
X09-28	1-3/4											
UCX10	50	100	55,6	25	22,2	33,4	10	M10x1	7,0	4300	29200	1,15
X10-30	1-7/8	4	2 1/5	1	7/8	1 1/3	2/5	3/8-24UNF	0,276			
X10-31	1-15/16											
UCX11	55	110	65,1	27	25,4	39,7	10	M10x1	7,6	47700	32800	1,55
X11-33	2-1/16	4 1/3	2 4/7	1	1	1 4/7	2/5	3/8-24UNF	0,299			
311-34	2-1/8											
311-35	2-5/16											
UCX12	60	120	65,1	28	25,4	39,7	10	M10x1	8,5	57200	40000	1,93
X12-38	2-3/8	4 5/7	2 4/7	1 1/9	1	1 4/7	2/5	3/8-24UNF	0,335			
X12-39	2-7/16											
UCX13	65	125	74,6	29	30,2	44,4	12	M12x1,5	8,9	62100	44800	2,08
X13-40	2-1/2	5	3	1 1/7	1 1/5	1 3/4	1/2	1/2-20UNF	0,350			
X13-41	2-9/16											
UCX14	70	130	77,8	30	33,3	44,5	12	M12x1,5	9,2	66200	49300	2,44
X14-42	2-3/8	5 1/8	3	1 1/6	1 1/3	1 3/4	1/2	1/2-20UNF	0,362			
X14-43	2-11/16											
X14-44	2-3/4											
UCX15	75	140	82,6	32	33,3	49,3	12	M12x1,5	9,5	72600	53300	2,90
X15-45	2-13/16	5 1/2	3 1/4	1 1/4	1 1/3	2	1/2	1/2-20UNF	0,374			
X15-46	2-7/8											
X15-47	2-15/16											
X15-48	3											
UCX16	80	150	85,7	34	34,1	51,6	12	M12x1,5	10,2	83300	63700	3,90
X16-49	3-1/16	6	3 3/8	1 1/3	1 1/3	2	1/2	1/2-20UNF	0,402			
X16-50	3-1/8											
X16-51	3-3/16											
UCX17	85	160	96,0	36	39,7	56,3	12	M12x1,5	11,2	96000	71100	4,70
X17-53	3-5/16	6 2/7	3 7/9	1 3/7	1 4/7	2 2/9	1/2	1/2-20UNF	0,441			
X17-55	3-7/16											
UCX18	90	170	104,0	39	42,9	61,1	16	M14x1,5	12,5	109000	82000	5,66
X18-56	3-1/2	6 2/3	4	1 1/2	1 2/3	2 2/5	5/8	9/16-18UNF	0,492			
UCX20	100	190	117,5	43	49,2	68,3	18	M16x1,5	13,7	133000	105000	8,56
X20-64	4	7 1/2	4 5/8	1 2/3	2	2 2/3	5/7	5/8-18UNF	0,539			

Data Table UK2 Bearing Insert



Unit NO.	Dimensions (mm / in.)									Dynamic load N	Static load N	Weight (kg)
	d1	d	D	B	C	B1	B2	d2	F			
UK205;H2305	20	25	52	23	17	35	8	38	4,3	14000	7850	0,24
205;HE2305	3/4	0.9843	2.0472	0.9055	0.6693	1.378	0.315	1.496	0.169			
UK206;H2306	25	30	62	26	19	38	8	45	5,2	19450	11250	0,36
206;HE2306	1	1.1811	2.4409	1.0236	0.7480	1.496	0.315	1.772	0.204			
206;HS2306	7/8											
UK207;H2307	30	35	72	29	20	43	9	52	5,7	25700	15200	0,52
207;HS2307	1-1/8	1.3780	2.8346	1.1417	0.7874	1.693	0.354	2.047	0.224			
UK208;H2308	35	40	80	31	21	46	10	58	6,2	29500	18100	0,67
208;HE2308	1-1/4	1.5748	3.1496	1.2205	0.8268	1.811	0.394	2.283	0.244			
208;HS2308	1-3/8											
UK209;H2309	40	45	85	31	22	50	11	65	6,6	32700	20900	0,77
209;HA2309	1-7/16	1.7717	3.3465	1.2205	0.8661	1.969	0.433	2.559	0.260			
209;HE2309	1-1/2											
209;HS2309	1-5/8											
UK210;H2310	45	50	90	32	24	55	12	70	6,5	35000	23200	0,92
210;HA2310	1-3/4	1.9685	3.5433	1.2598	0.9449	2.165	0.472	2.756	0.256			
210;HE2310	1-11/16											
210;HS2310	1-5/8											
UK211;H2311	50	55	100	35	25	59	12	75	7,1	43300	29200	1,15
211;HA2311	1-15/16	2.1654	3.937	1.378	0.9843	2.323	0.472	2.953	0.28			
211;HE2311	2											
211;HS2311	1-7/8											
UK212;H2312	55	60	110	38	27	62	13	80	7,9	47700	32800	1,47
212;HS2312	2-1/8	2.3622	4.3307	1.4961	1.063	2.441	0.512	3.15	0.311			
UK213;H2313	60	65	120	40	28	65	14	85	8	57200	40000	1,81
213;HA2313	2-3/16	2.5591	4.7244	1.5748	1.1024	2.559	0.551	3.346	0.315			
213;HE2313	2-1/4											
213;HS2313	2-3/8											
UK215;H2315	65	75	130	44	30	73	15	98	8,6	66200	49300	2,55
215;HA2315	2-7/16	2.9528	5.1181	1.7323	1.1811	2.874	0.591	3.858	0.339			
215;HE2315	2-1/2											
UK216;H2316	70	80	140	45	32	78	17	105	9	72600	53300	3,08
216;HA2316	2-11/16	3.1496	5.5118	1.7717	1.2598	3.071	0.669	4.134	0.354			
216;HE2316	2-3/4											
UK217;H2317	75	85	150	46	34	82	18	110	9,8	83300	63700	3,70
217;HA2317	2-15/16	3.3465	5.9055	1.8110	1.3386	3.228	0.709	4.331	0.386			
217;HE2317	3											
UK218;H2318	80	90	160	47	36	86	18	120	10,8	96000	71100	4,34
218;HA2318	3-3/16	3.5433	6.2992	1.8504	1.4173	3.386	0.709	4.724	0.425			

Notes

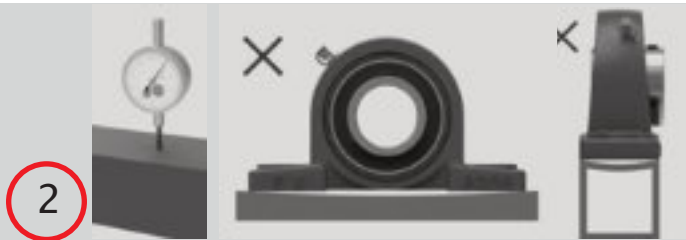
Mounting of a Set Screw Unit and Covers



1

Check accuracy of shaft

Before mounting the bearing unit, check the shaft accuracy for no bends, burrs, and other flaws.



2

Inspect the rigidity and flatness of mounting surface

The mounting surface must be sufficiently rigid, and the mounting surface must be as flat and smooth as possible. Flatness: Max 0.15 mm (0.05 is more useful).



3

Fill grease

Apply grease all around the seal lip of the cover, and fill the 2/3 internal space of the cover with grease.



4

Install bearing unit

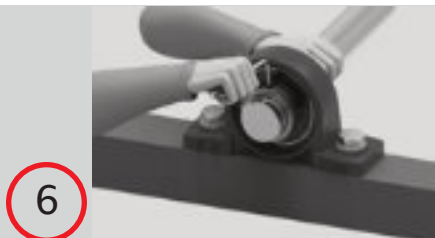
Pass one cover along the shaft, then slide the bearing unit onto the shaft. The step to install bearing unit onto the shaft is same as the mounting steps setscrew unit.



5

Pre-tighten housing

Tighten the bolts to the proper torque. We recommend using a washer with the bolt.



6

Tighten setscrews

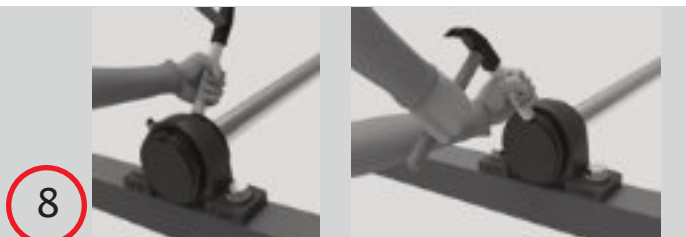
Insert a hexagonal bar wrench into the hexagonal hole of the setscrew, and tighten the setscrews with the recommended torque.



7

Tighten housing

Tighten the bolts to the proper torque.



8

Fit covers

Take the back cover and press it into the housing. Use a soft block and from 45° direction, exert a uniform impact on the cover to fit it into the groove on the housing. Repeat the same for the front cover.

1



Fit the sleeve onto the shaft

Fit the sleeve onto the shaft and position it so that its tapered section is centered to the bearing.

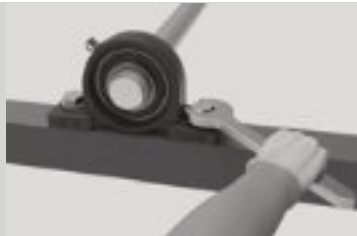
2



Install bearing units

Fit the bearing unit over the sleeve.

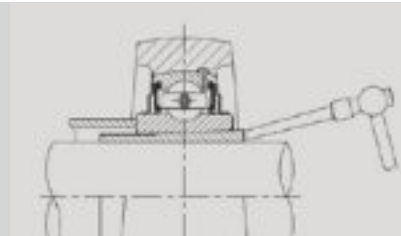
3



Pre-tighten housing

Tighten the bolts to the proper torque. We recommend using a washer with the bolt.

4



Tighten adapter sleeve

Gently tap side of sleeve so that the bearing inner ring is closely seated on the sleeve.

5



Fit washer and nut

Place the lock washer, and fully hand tighten thenut.

6



Lock the nut

Fit a jig or a screwdriver in one of slots on the nut, and tap it with a hammer until the nut turns 60 to 90 degrees. NEVER tap the slinger and NEVER overtighten the nut.

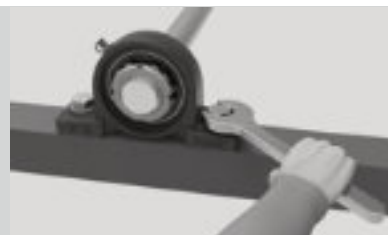
7



Secure the nut

Bend tabs of lock washer so that it fits into slots on the nut.
Never back rotate nut to fit washer tabs, forward rotate nut to fit the washer tabs.

8



Tighten housing

Excessive tightening of the mounting bolts may cause the housing to deform. Tighten the bolts to the proper torque.



Regal Beloit Belgiumnv

Heiveldkens 16
2550 Kontich, Belgium
Call: +32(03)457 68 70
Fax: +32(03)457 5138
Europe@regalbeloit.com

www.regalbeloit.com

APPLICATION CONSIDERATIONS

The proper selection and application of power transmission products and components, including the related area of product safety, is the responsibility of the customer. Operating and performance requirements and potential associated issues will vary appreciably depending upon the use and application of such products and components. The scope of the technical and application information included in this publication is necessarily limited. Unusual operating environments and conditions, lubrication requirements, loading supports, and other factors can materially affect the application and operation results of the products and components and the customer should carefully review its requirements. Any technical advice or review furnished by Regal Beloit America, Inc. and/or its affiliates ("Regal") with respect to the use of products and components is given in good faith and without charge, and Regal assumes no obligation or liability for the advice given, or results obtained, all such advice and review being given and accepted at customer's risk.

For a copy of our standard Terms and Conditions of Sales, please visit <http://regalbeloit.com> (please see link at bottom of page to "Standard Terms and Conditions of Sales"). These terms and conditions of sales, disclaimers and limitations of liability apply to any person who may buy, acquire or use Regal product referred to herein, including any person who buys from a licensed distributor of these branded products.

Regal and Rollway are trademarks of Regal Beloit Corporation or one of its affiliated companies.
©2015, 2018 Regal Beloit Corporation, All rights Reserved. MCB200124E • Form# 200124

REGAL[®]