

Cylindrical Roller Bearings

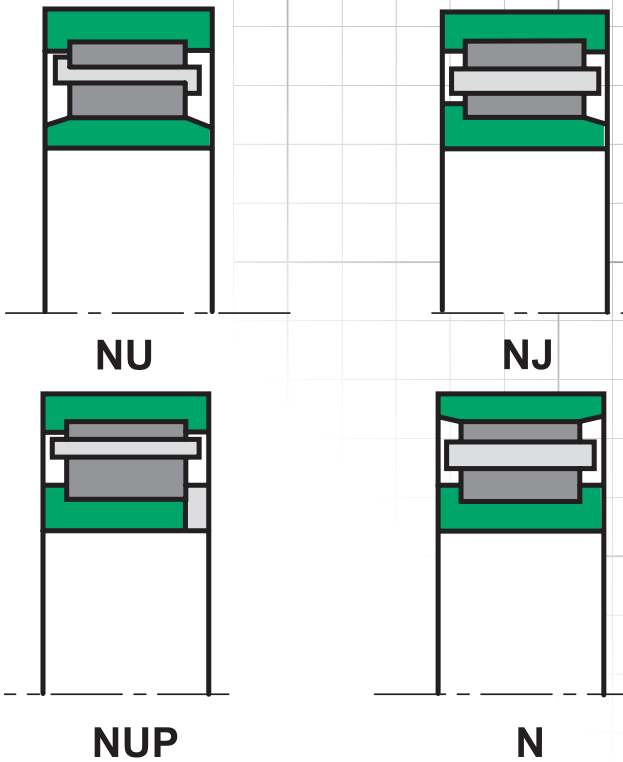
ROLLWAY®



A Regal Brand

REGAL

ROLLWAY® Single Row Cylindrical Roller Bearings



Series

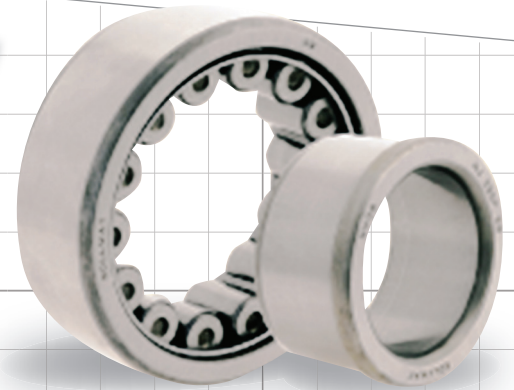
1000 | 200 | 2200 | 300 | 2300 | 400

The single row cylindrical roller bearings are designed to allow heavy radial loads at high speeds. They consist of cylindrical shaped rollers guided by ribs on either the outer or inner ring. Due to this design, the inner ring can move relative to the outer ring, allowing for an important axial displacement. Axial displacement can be limited as per the different designs.

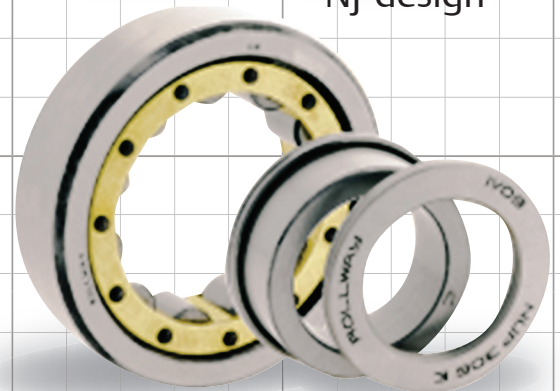
Versions

No suffix: steel cage

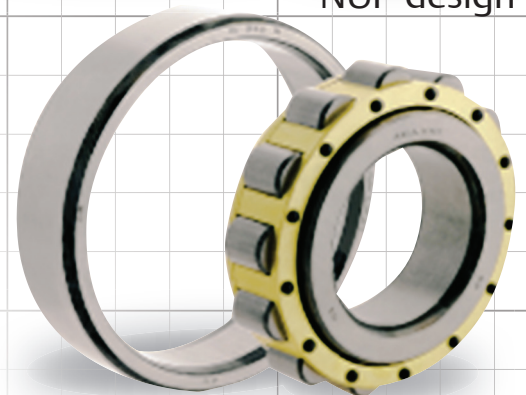
- ES: increased loading capacity and steel cage
- M: brass cage guided on the rollers
- EM: increased loading capacity and brass cage guided on the rollers
- MA: brass cage guided on the outer ring
- EMA: increased loading capacity and brass cage guided on the outer ring
- K: tapered bore (optional on double row cylindrical roller bearings)



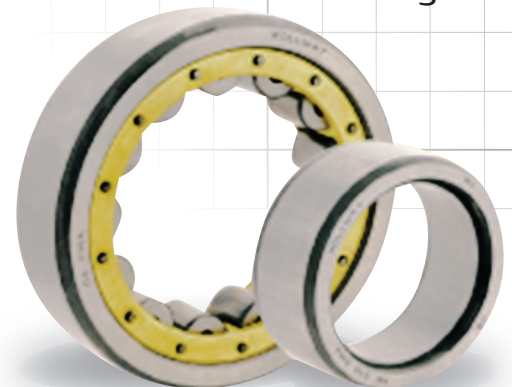
NJ-design



NUP-design

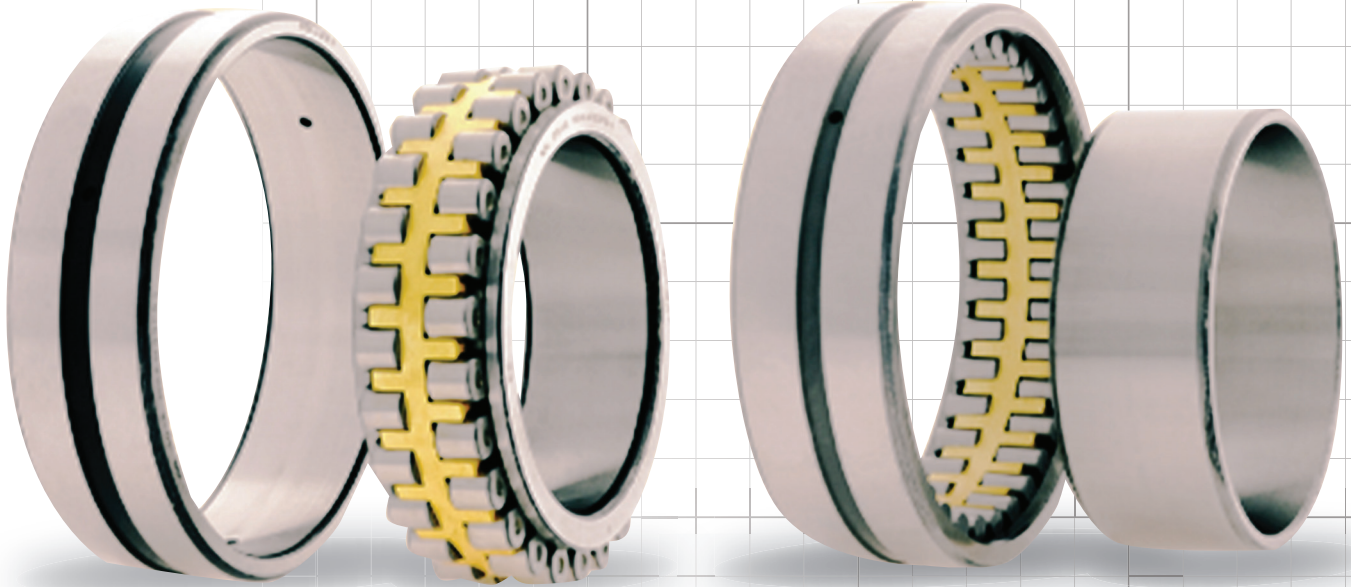


N-design



NU-design

ROLLWAY® Double Row Cylindrical Roller Bearings



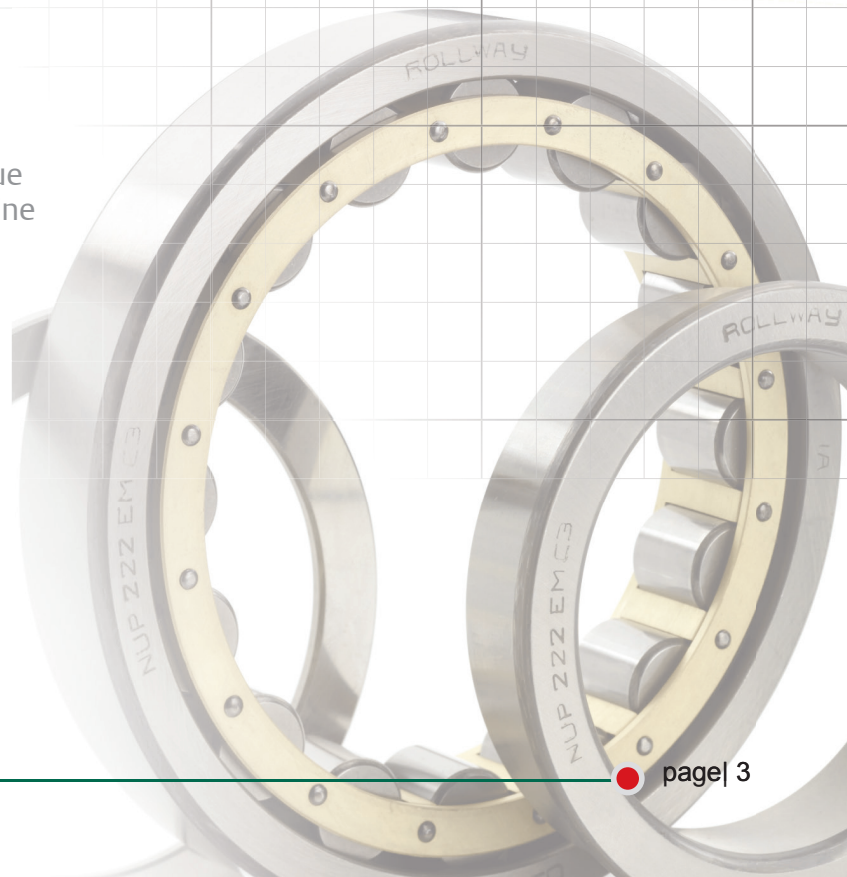
Series

NN 3000 | NNU 4900

The double row cylindrical roller bearings are available in high precision tolerances, and are due to their extreme rigidity, suited for use in machine tool spindles.

Versions

- MP51: brass cage and tight tolerances (standard)
- KNIP51: tapered bore
- NN: ribs on inner ring
- NNU: ribs on outer ring





ROLLWAY.

Regal Power Transmission Solutions
 7120 New Buffington Road
 Florence, KY 41042
 Customer Service: 800-626-2120
 Fax: 800-262-3292
 Technical Service: 800-626-2093

www.RegalPTS.com

APPLICATION CONSIDERATIONS

The proper selection and application of power transmission products and components, including the related area of product safety, is the responsibility of the customer. Operating and performance requirements and potential associated issues will vary appreciably depending upon the use and application of such products and components. The scope of the technical and application information included in this publication is necessarily limited. Unusual operating environments and conditions, lubrication requirements, loading supports, and other factors can materially affect the application and operating results of the products and components and the customer should carefully review its requirements. Any technical advice or review furnished by Regal Beloit America, Inc. and its affiliates with respect to the use of products and components is given in good faith and without charge, and Regal assumes no obligation or liability for the advice given, or results obtained, all such advice and review being given and accepted at customer's risk. For a copy of our Standard Terms and Conditions of Sale, Disclaimers of Warranty, Limitation of Liability and Remedy, please contact Customer Service at 1-800-626-2120. These terms and conditions of sale, disclaimers and limitations of liability apply to any person who may buy, acquire or use a Regal Beloit America Inc. product referred to herein, including any person who buys from a licensed distributor of these branded products.

Rollway is a trademark of Regal Beloit Corporation or one of its affiliated companies.
 ©2016 Regal Beloit Corporation, All Rights Reserved. MCB16005E • Form# 9605E • Printed in USA

LUTZ ROGALLA GmbH
 In der Au 8a
 D-74889 Sinsheim

Tel +49 7261-9180-0
 Fax +49 7261-9180-20
 contact@rogalla.de

ROGALLA
 WÄLLEN UND BESCHÜTTEN
 WWW.ROGALLA.DE

A Regal Brand

REGAL

www.regalbeloit.com